

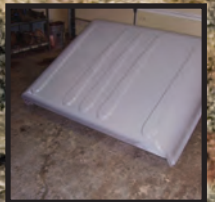
BOYCE

EQUIPMENT & PARTS COMPANY



8th EDITION

Dealers of Military Truck Parts for Over 50 Years.
A Name You Can Trust!





LET US INTRODUCE OURSELVES

Boyce Equipment is a family run business founded more than 50 years ago.

We are dealers in the field of military trucks, truck parts and equipment. We carry vehicles ranging from the 1 1/4 ton Dodge, G.M., 4 x 4's and 2 1/2 ton REO'S through the GMC 6 x 6's, Kaiser and A.M. General 5 ton, 10 ton and 25 ton 6 x 6's.

We offer original equipment power trains and specialize in heavy duty conversions using Dana 44's, 60's, 70's and 2 1/2 ton thru planetary axles.

We feature a complete shop, located in Ogden, Utah (801) 393-0007, 1-800-748-4269 and offer service and rebuilding on all our equipment.

Our customers range all over the world in many different fields, from farming, construction and recreational vehicles to complete monster truck builders.

We also deal with heavy-duty civilian equipment including custom made farm tractors, crawlers, winches, generator sets and truck tires.

Since we have such a turnover in volume of parts and equipment, we can offer lower prices than perhaps anyone in North America.

We hope that we can serve you in the very near future. Wherever you are, we want you to feel that we're just a phone call away. If you have any questions about anything in our catalog, please feel free to call or write us anytime. To speed up orders, or for specifications fax us for prompt service at (801) 392-4746.

For you, we are always available.

BOYCE EQUIPMENT AND PARTS CO., INC.

2893 South American Way
Ogden, Utah 84401
(801) 393-0007
Fax (801) 392-4746
Toll Free (800) 748-4269

TABLE OF CONTENTS MILITARY VEHICLES

2 1/2 TON 6X6 TRUCKS	2
5 TON 6X6 TRUCKS	3
MILITARY "M" SERIES VEHICLES	4
M35A2 BOBBED DEUCE	5
ENGINES AND OTHER EQUIPMENT	6
AXLE INTRODUCTION	7
1 TON AXLE CONVERSIONS	8
2 1/2 TON AXLE CONVERSIONS	9
5 TON AND PLANETARY AXLES	10
2 1/2 TON AXLE OPTIONS	11
HYDRAULIC STEERING COMPONENTS	12
TRANSFER CASE/TRANSMISSIONS	13
DANA 44 FRONT AXLE PARTS LIST	14
DANA 60 FRONT AXLE PARTS LIST	15
DANA 60 REAR AXLE PARTS LIST	16
14 BOLT CORPORATE REAR AXLE PARTS LIST	17
1 1/4 TON FRONT AXLE PARTS LIST	18
1 1/4 TON FRONT WHEEL/REAR AXLE PARTS LIST	19
2 1/2 TON FRONT STEERING/AXLE PARTS LIST	20
2 1/2 TON REAR AXLE/BRAKES PARTS LIST	21
2 1/2 TON DIFFERENTIAL PARTS LIST	22
5 TON DIFFERENTIAL PARTS LIST	23
5 TON AXLE/BRAKES PARTS LIST	24
5 TON HUB & DRUM PARTS LIST	25
GMC 2 1/2 TON PARTS LIST	26
GMC 2 1/2 TON PARTS LIST CONTINUED	27
FILTERS	28
RADIATOR AND BODY PARTS	29
DOOR COMPONENTS	30
LIGHTS AND GAUGES	31
SWITCHES AND STARTERS	32
ELECTRICAL, IGNITION AND SPARK PLUGS	33
SENDING UNITS AND WIPER PARTS	34
BRAKE SHOES AND HOSES	35
BRAKE PARTS	36
BRAKE CABLE, AIR PAK AND BOOTS	37
CLUTCH ASSEMBLIES	38
ORDERING INFORMATION	39



THE PROVEN DURABILITY & RUGGEDNESS OF THE ALL WHEEL DRIVE MILITARY TRUCK HAS BECOME A VALUABLE TOOL IN THE INDUSTRY TODAY

Military 6 Wheel Drive Trucks

These late "M" series trucks, with 4 and 6 wheel drive, are military trucks which we offer for sale at a fraction of new truck cost. Trucks are reconditioned in our modern shops under the most exacting standards and controls to give like new truck performance.

Boyce Equipment and Parts Co. is one of the largest rebuilders of surplus military vehicles. We have built a reputation for quality in this specialized field over a period of more than 50 years. Our "M" series trucks cannot be surpassed on jobs where maximum traction and power are required.

Boyce complete shop facilities are available for installing options, custom bodies, front and rear winches, "A" frames, hoists, fifth wheels and all other types of truck equipment. We carry a complete stock of replacement parts and optional accessories to insure that we can tailor any "M" Series truck to meet your exact needs. Hundreds satisfied customers in contracting, logging, drilling, farming and other trades are proof of our commitment to supply maximum value for your dollar.

2 1/2 TON 6X6



**DUMP TRUCKS, TRACTORS, WATER TRUCKS, WRECKERS, CARGO & FLATBED TRUCKS.
OVER A HUNDRED MILITARY VEHICLES IN STOCK. NEW STOCK REGULARLY.**

Specs

- Gas (OA-331 MFG Reo) 127 H.p. at 3200 RPM
 - Diesel (LD 465-LDT 465) MFG White-Continental 180 H.P. at 2600 RPM
 - 3053-A 5-speed overdrive transmission
 - T-136 Rockwell 2-speed transfer
 - FC-240 Rockwell Double reduction axle 6.72 Ratio
 - Air-over-hydraulic brakes
 - 24 electrical system
 - 900 x 20 military tires
 - GVW 23,380
- Net weight 13,000

Options

- Fiberglass cab enclosure
- 24v heater (water type)
- 12,000 Lbs pto winch
- 24 volt to 12 volt conversion
- T-136-21 air shift transfer case
- West coast mirrors
- Paint available to spec
- Frames lengthened to spec
- Air shiftable front axle
- Turbo charged engine



5-TON 6X6



**DUMP TRUCKS, TRACTORS, WATER TRUCKS, WRECKERS, CARGO & FLATBED TRUCKS.
OVER A HUNDRED MILITARY VEHICLES IN STOCK. NEW STOCK REGULARLY.**

Specs

- Engine (GAS R6602 Continental)
- Diesel (ENDT-673 Mack) 240 H.P.
(LDS-465 White) 180 H.P.
(NHC-250 Cummings) 250 H.P.
- 5-speed direct or overdrive transmission
- Power Steering
- 2-speed transfer case
- 1100 x 20 military tires
- 24 v electrical system
- GVW 44,000
- Net weight 16,000

Options

- Fiberglass cab enclosure
- 24 v heater
- 20,000 Lbs pto winch
- 24 volt to 12 volt conversion
- West coast mirrors
- Frames lengthened to spec
- Paint available to spec

100% REPLACEMENT PARTS IN STOCK



**WE STOCK AND SUPPLY PARTS FOR ALL TYPES OF
“M” SERIES VEHICLES
CALL US FOR HARD TO FIND PARTS**



3/4 Ton Dodge M-37



1 1/4 Ton M-715 Kaiser-Jeep



GMC 2 1/2 Ton M-135, M-211



2 1/2 Ton M-35



GM 1 1/4 Ton M-1008



5 Ton Dump



2 1/2 TON M35A2 BOBBED DEUCE

Boyce Equipment offers a custom built Bobbed Deuce that is ready to work or play. Our trucks are serviced in a modern facility and we offer many customized options. Tires, Tops, Long Frames, Short Frames, we always complete it the way you want it.

Boyce Equipment has been selling military trucks and parts for over 50 years and we know how to get it done.



Specs

- New Fiberglass Top (Removable)
- Recovered Seats (Driver Seat Spring Ride)
- Electrical—Checked out completely
- LDT 465 Turbo Charged Engine, Low Mileage, Checked out and Serviced
- 5 Speed Overdrive Transmission—Serviced
- Air Shift Front Engage Transfer Case—Serviced
- Air Over Hydraulic Brakes—Serviced
- 4-New Custom 20x11 Wheels (Not Surplus)
- 4-High Tread 1400x20 Goodyear/Michelin Tires
- Cooling System Serviced with New Hoses and Belts
- Military Trailer Bed Installed
- Fresh Industrial Paint (1 Color)
- Fully Serviced
- Good Clear Window Glass
- Operating Windshield Wipers
- 2-New Group 34 Batteries
- West Coast Mirrors
- Shortened or Lengthened to Customer Specs

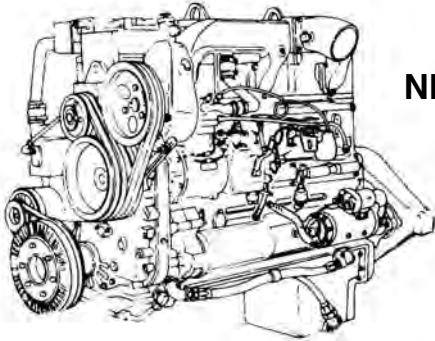
Options

- Fiberglass Top DOT Lighting
- Sliding Rear Window
- Bucket Seat Spring Ride Passenger
- DOT Lighting on Bed
- Camo Painting
- Hydraulic Power Steering
- Air Conditioning (12V / 24V)
- 12 Volt Conversion
- 24 to 12 Volt 60 Amp Solid State Reducer
- Winch Installed (PTO Driven)
- PTO Installed with PTO Shaft to Rear
- Rear Trailer Hitch Installed
- Spare Tire and Custom Wheel
- Spare Tire and Stock GI Wheel
- Detroit Locker—Installed
- ARB Air Locker—Installed
- Free Wheeling Lock Out Hubs—Installed



ENGINES

Cummins, Continental, Hercules, Mack, Dodge, GM 6.2, Reo, White, Detroit. Engines In Stock. Good Used and Rebuilt.



NHC 250 Cummins Engine

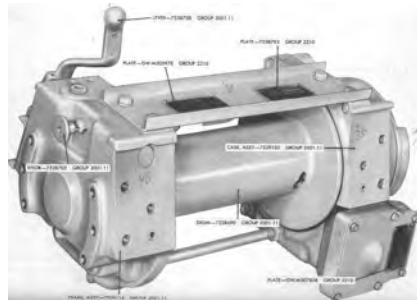


**LDT465
Multi-fuel**

Multi-Fuel Government Design Engines

ENGINE MODEL	NUMBER CYLINDERS BORE AND STROKE	PISTON DISPLACEMENT (CU. IN.)	MAX. BRAKE H.P. (WITH BARE ENGINE AT SPECIFIED RPM)	PEAK TORQUE (IN FT.LBS. AT SPECIFIED RPM)	COMPRESSION RATIO	LENGTH - IN INCHES (FAN TO FLYWHEEL)	HEIGHT - IN INCHES (BOTTOM OF OIL PAN TO TOP OF COVER)	WIDTH IN INCHES	DRY WEIGHT
LD465	6 - 4.56 x 4.88	478	135@2600	320@1400	22:1	48.04	41.20	29.68	1614
LDT465	6 - 4.56 x 4.88	478	140@2600	325@1400	22:1	48.04	41.20	30.18	1650
LDS465	6 - 4.56 x 4.88	478	180@2600	450@1400	22:1	48.28	40.32	32.88	1650

WINCHES



12,000 LB Garwood



20,000 LB

Power Winches

We stock P.T.O. winches starting at 6000 lbs all the way up to 60,000 lbs. Front mounted, we usually have what you need. Our 20,000 lbs Garwood, is ideal installing in the rear of trucks with its 34 in. width. It too can be bolted to a stock frame. The length (30 in.) is sometimes bulky, mounted in the front. It fits nicely under truck beds. Weight-220 lbs. Our 12,000 lb Garwood winch is the most popular since it can be mounted between most stock truck frames (34 in.) Bolts from outside of the frame. Weight-156 lbs.

FIBERGLASS TOPS & FRONT CLIPS

We offer new fiberglass tops for M-37/Dodge - M-715 Kaiser Jeeps. 2 1/2 Ton - 5 Ton Trucks, also. New to our line is our 900 Series Tops and Front Clips. Call for prices.



2 1/2 - 5 Ton



M-715



**2 1/2 Ton
Installed**



WE OFFER ORIGINAL EQUIPMENT POWER TRANS, AND SPECIALIZE IN HEAVY DUTY CONVERSIONS USING DANA 44'S, 60'S, 70'S, GM CORPORATE AXLES. FOR SUPER HEAVY DUTY WE OFFER 2 1/2 TON THRU 30 TON PLANETARIES, CALL FOR A QUOTE ON ANY APPLICATION.

All our axles are first disassembled to the bare housing, then completely cleaned and checked for wear. Any part showing undue wear is replaced.

Our axles are then reassembled with new seals, knuckle boots, brake pads and wheel cylinders.

At the time of reassembly, your axle can be built with gear changes (limited slip-locking-differentials) custom disc brakes, spring pads/moved, housing modifications with little or no labor charge at the time of purchase. Also many used and government rebuilt axles in stock.

Also, all our axles are painted primer or black, then packed and shipped. We take pride in sending you a 100% Guaranteed rebuilt axle.

We have been praised by many who have purchased our axles and other equipment. They have expressed great satisfaction in our quality and workmanship, and quite frankly, we love the compliments and intend to earn more.

All other rebuilt parts go through the same process and demand our utmost attention.

(Dana 44's, 60's, 70's)



FORD, CHEVROLET, DODGE, CUSTOM.
We Rebuild to Your Spec's.

Rockwell



GM Corp 14-Bolt



10-Bolt, Dana 60 Rears
Dana 70 Rears, Sterling Rears
Built to Spec.

**REBUILDING AXLES FOR OVER 30+ YEARS WITH THE SAME
CONFIDENT 1-YEAR WARRANTY WE ALWAYS HAVE OFFERED.**



**ARE YOU TIRED OF BREAKING YOUR STOCK 1/2 TO 3/4 TON AXLES.
THEN
STEP UP TO 1 TON OR 2 1/2 TON AXLES**

We feature our Dana 60, Dana front axle, with Corporate 14 bolt rear to make your truck capable of running oversize tires, plus high horse performance engines, without the frustrating and costly breakdowns, when you count on your truck the most.

Boyce offers U-Bolts, Spring Plates (sway bar mounts), Lock-out Hubs, Spring Pads moved to your specs. Gear changes from 2.73-5:13 ratio, any type of lockers or limited slips available.

When converting your truck please call with your make, model and spring pad measurement (center to center of springs), so we can help you take the guess work out of your project.



Spicer / Dana-60 front axle

FORD / CHEVROLET /
DODGE / CUSTOM



GM 14-bolt Corp rear axle

CALL WITH YOUR SPECS





ROCKWELL 2 1/2 TON AXLES

For the **ULTIMATE** in competition and show truck axles. Used for Rock Crawling, Mud Bogging, Farming and Industrial.

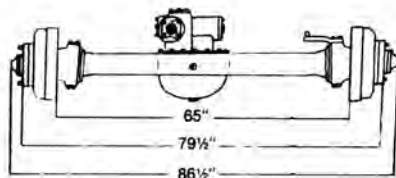


These top loader axles are excellent for eliminating severe driveline angles when used with high lift suspensions for 40 inch and taller tires. (These axles are only available in 6:72 Ratio.)

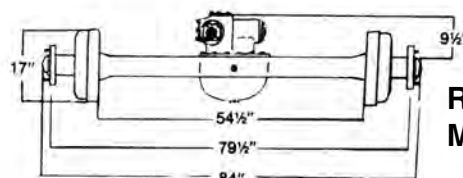
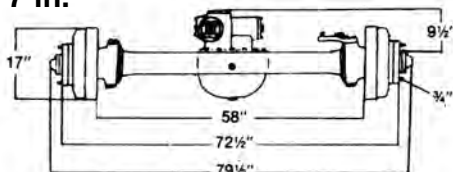
They are great for rear steering applications.

Detroit Lockers, Disc Brakes, Rear Steering Rams and Mounts can be installed at time of purchase. Kits available with axles, wheels, suspensions and installation hardware.

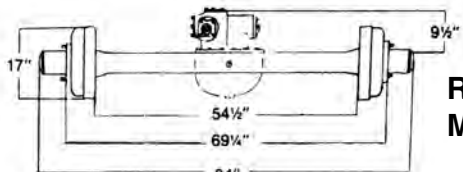
FRONT AXLE SPECS MTF-250 Original



FRONT AXLE SPECS MTF-250 Shortened 7 in.



REAR AXLE SPECS MTF-250 Standard

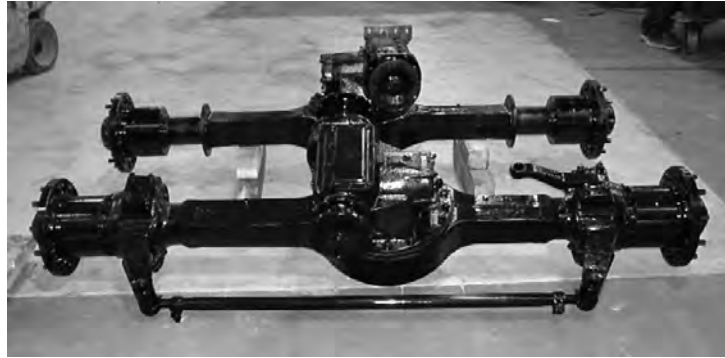


REAR AXLE SPECS MTF-250 Short Hub

Providing Military Axle Parts for 30+Years.
CALL AND EXPECT YOUR STUFF – NOW.



5 TON AND PLANETARY AXLES



MTF-500 5 Ton Front Axle

MTR-500 5 Ton Rear Axle

Our 5 Ton military axles (MTF-500) are used for the all-out enthusiast who isn't satisfied with just a big truck. These axles are sold to those of you who would like to run a tire bigger than 60 inches. Monster trucks, mud buggers, and tractor pullers have used these axles. If you're building a street legal truck, these are probably out of the question due to the size and weight.

At Boyce, we offer complete suspension conversion kits (MTK-500), 10-26 gear changes, Detroit Lockers, etc. We also put together complete monster truck packages including tires, wheels, frames, transfer case, steering, etc.

These axles come with a stock 6.44 gear ratio and a stout 2 inch axle shaft. They keep getting more popular with all types of applications.

Planetaries

Clark – Pettibone – Rockwell

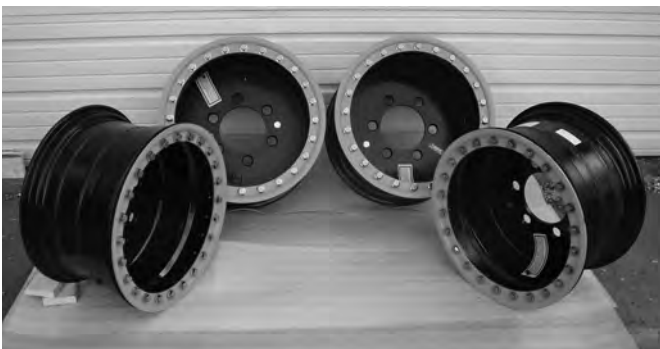
We stock a lot of different types of low-reduction axles.

ROCKWELL, CLARK, PETTIBONE, MRS.

GIVE US A SHOUT, WE PROBABLY HAVE WHAT YOU NEED!

CUSTOM WHEELS & TIRES

WE HAVE THEM! 15" TO 25" WHEELS! We can custom build you **ANY** size wheel for your needs. Call with your specs and we can quote you the wheel for you application. We stock military tires of **ALL** sizes, chances are, we have what you need.





2 1/2 TON 6X6 TO 4X4 BOBBER KIT

Making your 6x6 into a 4x4



MTK 250 Suspension Kit (1 Axle Only)

Kit Consists of:

- 2 2 1/2 Ton Springs
- 4 Spring Brackets
- 2 Shackles
- 6 Spring Pins
- 2 Spring Seats
- 2 Top Plates

L-Shaped brackets are excellent for use with custom C-channel and rectangular tube frames. (custom re-arch available)

Disc Brake Kit

MBD-250/2 1/2 Ton

MBD-500 5 Ton

Can be purchased separately or installed. Eliminates brake drums and backing plates and lightens axle for competition use. Easily installed using stock brake system. Kit includes all mounting hardware to be installed in minutes.



14 Bolt Disc Brake

Can be purchased separately or installed. Eliminates brake drums and backing plates and lightens axle for competition use. Easily installed using stock brake system. The kit can be purchased with standard calipers or with park brake calipers. Kit includes all mounting hardware.

MTD-250 A

A Complete 2 1/2 Ton Driveline

These drivelines used mostly with the ATC-250 2 1/2 ton transfer case and 2 1/2 Ton Rockwell axles. The MTD-250-A uses 1410 U Joints.



MTD-250 B

Driveline Ends

Just take to a drive line shop and have our ends welded to your original driveline. Advantage: low cost, easy to replace.



RSL-250

Rear Steering Lock

Our rear steering lock is a must for rear steering vehicles. Lock pins installed on each knuckle for maximum safety.



MDL-250

Detroit Lockers No Spin Differential

For traction when it counts, Boyce is proud to be a rep for Detroit Lockers. We have these available for both 2 1/2 ton and 5 ton applications.

Detroit Locker is the automatic positive locking differential that has offered the operators of high-performance cars, trucks and off-road construction vehicles the maximum possible traction for 40 years. It prevents spin-outs by powering both wheels even when one leaves the ground.



HYDRAULIC STEERING COMPONENTS

Front Steering

The Char-Lynn steering control unit is fully fluid linked. This means there is no mechanical connection between the steering unit, the pump and the steering cylinders. The unit consists of a manually operated direction control valve and servo feedback meter element in a single body. It is used principally for fluid linked power steering systems, but it can be used for some servo-type application where visual positioning is required. The close-coupled rotary action valve performs small number of moving parts.

Char-Lynn hydraulic steering units work ideally with all military axles. They are installed either to the frame or the firewall. You cut the steering shaft off about 14" past the firewall, and then attach the Char-Lynn to the shaft. Instructions are included.

Rear Steering

12 volt electric/hydraulic remote control power pack equipped with control for operating cylinders. The high volume of the pump makes it ideal for use with most cylinders. Closed loop type system returns fluid directly to the input side of the pump when returning from the cylinder. This provides added safety as the cylinder will not retract as fast as it extends. This power pack can be used to power tail gates, hydraulic hoists and attaches to truck and farm machinery.

12 volt, single terminal motor. A #4 (.333") gear face 13T spline drive pump. 1/4 NPTF ports. Adjustable relief valve at 2500 psi. A 3-position, 4-way, solenoid operated valve with a pilot check valve. A 3 quart reservoir for horizontal mounting.



Steering Valve FSV

The steering motors are standard 4 bolt square mount on a 3/4" circle, have an internal spline, O-ring ports, 2500 psi., 300 psi, back pressure, are open center and weight 8 lbs.



Column Kit FSV-10

Char-Lynn Stub to Column Kit.

Consists of:
1 Spline yoke
1 3/4 Keyway yoke
1 U-joint



Rear Steering Pump RPP



Hydraulic Steering Cylinder (part# FSR 250)

Boyce steering cylinders provide long life and reliable operation due to design features and quality workmanship.

Features:

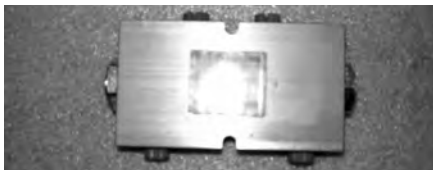
- 2500 psi working pressure (4000 psi max. shock)
- Precision honed cylinder barrels for long seal life
- Hardened chrome plated rods resist damage and rust
- Rod wipers clean dirt from rod to give long seal life
- Clevis mounting with 1" pin holes on 2" bore sizes: 1 1/4" pin holes on 5" bore
- Ports in line with pins



Hydraulic Steering Cylinder Mount (part# HSCM)

Our latest steering cylinder mounts are pre-fitted to take the guesswork out of installing the FS series cylinders. These mounts have replaceable oil impregnated bushings for long lasting wear.

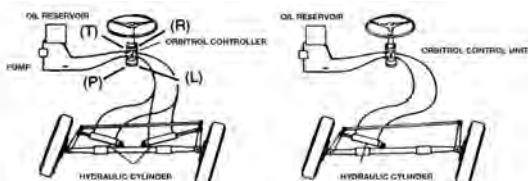
Installed with no labor charge with axle purchase.



Cushion Valves (part# FCV)

Used to stop or minimize shock, surge and overloads. Mounts between control valve and cylinder or motor. May be used to regulate pressure on one cylinder of a circuit without disturbing any other. Bypass oil is sent to the opposite side to prevent cavitation.

(T) = Tank
(P) = Pump
(R) = Right
(L) = Left



Our Char-Lyn steering valves are engineered to match your hydraulic steering requirements.



REMEMBER BOYCE CARRIES A FULL STOCK OF TRANSFER CASE REPLACEMENT PARTS

Transfer Cases

NEW PROCESS
BORG WARNER
TIMIKEN
PRO-FAB
SCS

We Have Them All



NP 200



NP 205



NP 208

All Transfer
Cases Come
With a
1-Year Warranty

Rockwell, T-136, T-138, T-223, T-226



*Custom or Stock, Call us with
your specs and application.*

2 1/2 thru 5 Ton

TC-250 air shift front
drive is also available

Rockwell, T-136, T-138, T-223, T-226



5 Ton T-138

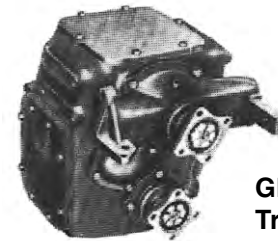
GMC, M211, M135, G749, G506, G508 GMC 2 1/2 Ton Transfer Case

We convert these units to a two-speed. For those who already own one, we have a large stock of parts for this unit. Call for prices. (Not listed in price list)

Model: G-749 – G-508
Mfg: GMC

Ratios: High: 1.00:1, Low: 1.89:1

This unit is best used with GMC style axle with reverse rotation.



GMC 2 1/2 Ton
Transfer Case



3053A

2 1/2 Ton Applications



6453, 6352

5 Ton Applications

Military Transmissions

We offer the transmission that was used in the truck that holds the land speed record for one ton range and up—the Spicer Model 3053A. Fully syncroed and will hold up to large horsepower gas and diesel engines. Replacement parts always in stock.

Make: Spicer

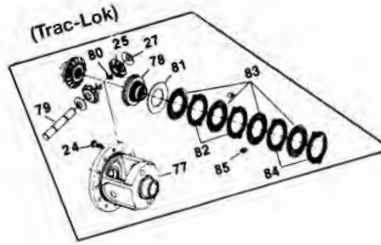
Model: 3053A

Gear Ratios:	Reverse	5.90:1	Third	1.89:1
	First	6.00:1	Fourth	1.00:1
	Second	3.31:1	Fifth	0.85:1

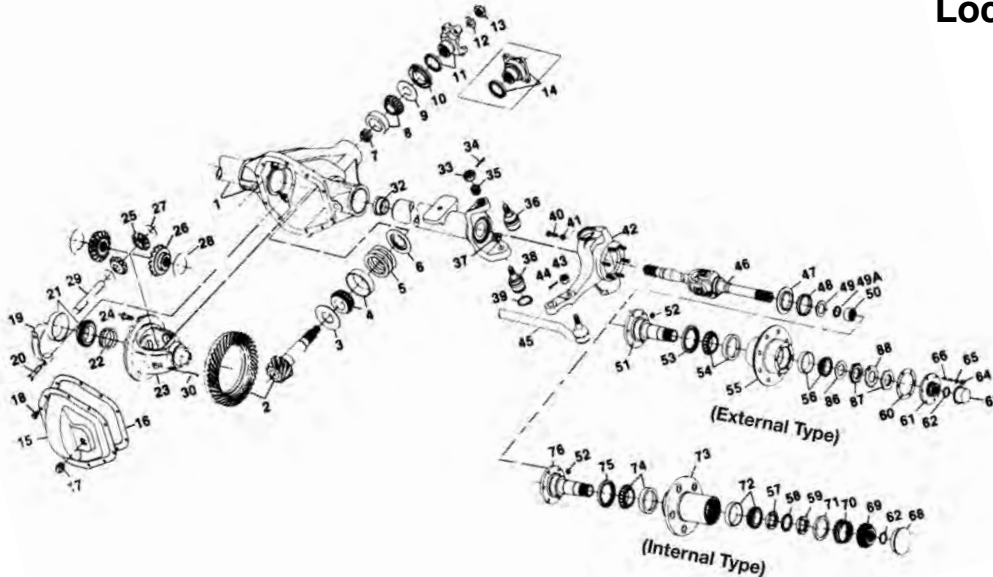
*The 3053A Spicer Transmission fits almost all Diesel applications as well as most Chevrolet engines.
Dodge and Ford applications are more expensive to install. Call for information!*



Model 44 Front Axle – GMC/Chevrolet



Call for Ring & Pinion or Locker Quotes.



- | | | |
|--|--|------------------------------------|
| 1 (1) Housing – Axle Service | 35 Upper Socket Assembly | 69 Pressure Spring |
| 2 Drive Pinion & Gear Assembly | 36 Lock Nut | 70 Spring Retaining Plate |
| 3 Slinger – Inner Pinion Bearing | 37 Lower Socket Assembly | 71 Wheel Bearing Adjusting Nut |
| PKG – Inner Pinion Bearing | 38 Snap Ring | 72 Lock Nut |
| 4 KIT – Inner Pinion Bearing | 39 Stop Screw | 73 Nut & Pin Assembly – Inner Lock |
| 5 Inner Pinion Shims | 40 Jam Nut | 74 KIT – Outer Wheel Bearing |
| 6 Baffle – Pinion Bearing | 41 Knuckle Assembly | 75 Wheel Hub |
| 7 Outer Pinion Shims | 42 (1) Nut – Hex Slotted | 76 KIT – Inner Wheel Bearing |
| 8 KIT – Outer Pinion Bearing | 43 (1) Cotter Pin | 77 Oil Seal |
| 9 Slinger – Outer Pinion bearing | 44 (1) Tie Rod Assembly | 78 Wheel Bearing Spindle |
| 10 Seal – Pinion Oil | 45 Shaft & Joint Assembly | |
| 11 (2) End Yoke Assembly | 46 Slinger – Spindle Yoke
(pressed on axle shaft if used) | |
| 12 Washer – Pinion Nut | 47 Oil Seal | |
| 13 Pinion Nut | 48 Spacer – Wheel Bearing Spindle | |
| 14 (2) Companion Flange Assembly | 49 Oil seal – Block Vee | |
| 15 Carrier Cover | 50 Needle Bearing Assembly | |
| 16 Carrier Cover Gasket / Sealant | 51 Wheel Bearing Spindle | |
| 17 Plug – Carrier Cover | 52 Brake Mounting Nut | |
| 18 Bolt – Carrier Cover (qty 10) | 53 Oil Seal | |
| 19 (1) Differential Bearing Cap | 54 KIT – Inner Wheel Bearing | |
| 20 (1) Bolt – Differential Bearing Cap | 55 Wheel Hub | |
| 21 KIT – Differential Bearing | 56 KIT – Outer Wheel Bearing | |
| 22 Shim – Differential Bearing | 57 Wheel Bearing Lockwasher | |
| 23 Case – Differential | 58 Wheel Bearing Nut | |
| 24 Bolt – Drive Gear (qty 10) | 59 Lockwasher – Wheel Brg Nut | |
| 25 Pinion – Differential | 60 Drive Flange Gasket | |
| 26 Gear – Differential | 61 Drive Flange | |
| 27 Thrustwasher – Diff. Pinion | 62 Snap Ring | |
| 28 Thrustwasher – Diff. Gear | 63 Hub Cap | |
| 29 Shaft – Differential Pinion | 64 Nut | |
| 30 Lock – Differential Shaft | 65 Lockwasher | |
| 31 Seal & Guide Tube | 66 Stud | |
| 32 Nut – Hex Slotted | 67 Hub Cap | |
| 33 Cotter Pin | 68 Axle Drive Gear | |
| 34 Adjusting Split Ring | | |

Power-Lok & Trak-Lok Differential

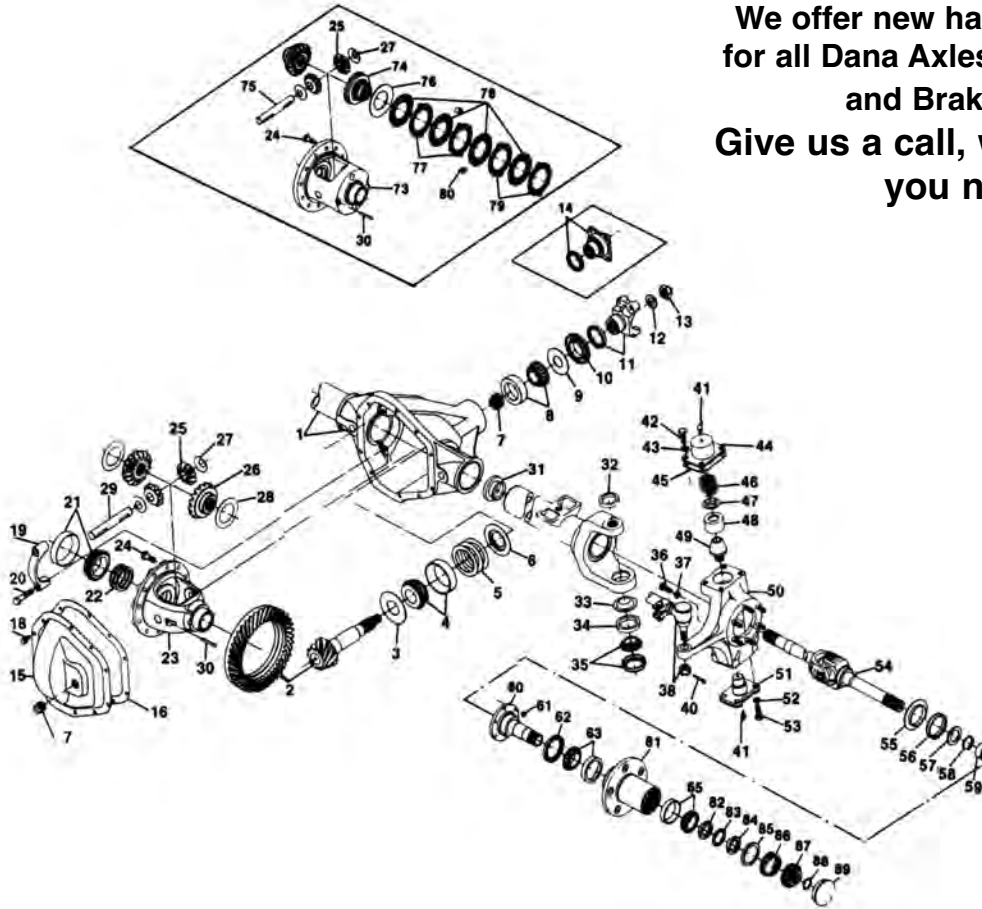
- | |
|------------------------------------|
| 79 Case - Differential |
| 80 Gear – Differential |
| 81 Shaft – Differential |
| 82 Snap Ring |
| 83 Spacer – Diff. Gear (dished) |
| 84 Plate – Differential |
| 85 Disc – Differential |
| 86 Plate – Differential |
| 87 Clip – Diff. Clutch Retainer |
| 88 Flange Half – Differential Case |
| 89 Cap Half – Differential Case |
| 90 Shaft – Differential |
| 91 Pinion – Differential |
| 92 Gear – Differential |
| 93 Ring – Differential Gear |
| 94 Plate – Differential |
| 95 Disc – Differential |
| 96 Disc – Differential (dished) |
| 97 Plate – Differential (dished) |
| 98 Bolt – Differential Case |



Model 60 Front Axle – GMC/Chevrolet – Ford – Dodge

**We offer new hard to find parts
for all Dana Axles, Hubs, Rotors,
and Brake Parts.**

**Give us a call, we know what
you need!**



- | | | |
|--|------------------------------------|-----------------------------------|
| 1 (1) Housing – Axle Service | 28 Thrustwasher – Diff. Gear | 55 Slinger – Spindle Yoke |
| 2 Drive Pinion & Gear Assembly | 29 Shaft – Differential Pinion | (pressed on axle shaft if used) |
| 3 Slinger – Inner Pinion Bearing | 30 Lock – Differential Shaft | 56 Oil Seal |
| 4 KIT – Inner Pinion Bearing | 31 Seal & Guide Tube | 57 Spacer – Wheel Bearing Spindle |
| 5 Inner Pinion Shim | 32 Seal – Upper King Pin | 58 Oil Seal – Block Vee |
| 6 Baffle – Pinion Bearing | 33 Grease Retainer | 59 Needle Bearing Assembly |
| 7 Outer Pinion Shims | 34 Oil Seal | 60 Wheel Bearing Spindle |
| 8 KIT – Outer Pinion Bearing | 35 KIT – Lower King Pin Bearing | 61 Brake Mounting Nut |
| 9 Slinger – Outer Pinion Bearing | 36 Stop Screw | 62 Oil Seal |
| 10 Seal – Pinion Oil | 37 Jam Nut | 63 KIT – Inner Wheel Bearing |
| 11 (2) End Yoke Assembly | 38 (1) Tie Rod Assembly | 65 KIT – Outer Wheel Bearing |
| 12 Washer – Pinion Nut | 40 Cotter Pin | 81 (1) Wheel Hub |
| 13 Pinion Nut | 41 Lube Fitting | 82 Inner Wheel Bearing Nut |
| 14 (2) Companion Flange Assembly | 42 Nut – Hex Tapered | 83 Lock Nut |
| 15 Carrier Cover | 43 Lockwasher – Upper Kin Pin Cap | 84 Outer Wheel Bearing Nut |
| 16 Carrier Cover Gasket / Sealant | 44 Steering Arm (LH only) | 85 Spring Retaining Plate |
| 17 Plug – Carrier Cover | Upper King Pin Cap (RH only) | 86 Pressure Spring |
| 18 Bolt – Carrier Cover | 45 Gasket – King Pin Cap | 87 Axle Drive Gear |
| 19 (1) Differential Bearing Cap | 46 Compression Spring | 88 Snap Ring |
| 20 (1) Bolt – Differential Bearing Cap | 47 Retainer Spring | 89 Hub Cap |
| 21 KIT – Differential Bearing | 48 King Pin Bushing | |
| 22 Shim – Differential Bearing | 49 King Pin | |
| 23 Case – Differential | 50 Knuckle Assembly | |
| 24 Bolt – Drive Gear | 51 Lower King Pin Bearing Cap | |
| 25 Pinion – Differential | 52 Lockwasher – Lower King Pin Cap | |
| 26 Gear – Differential | 53 Hex Bolt – Lower King Pin Cap | |
| 27 Thrustwasher – Diff. Pinion | 54 Shaft & Joint Assembly | |

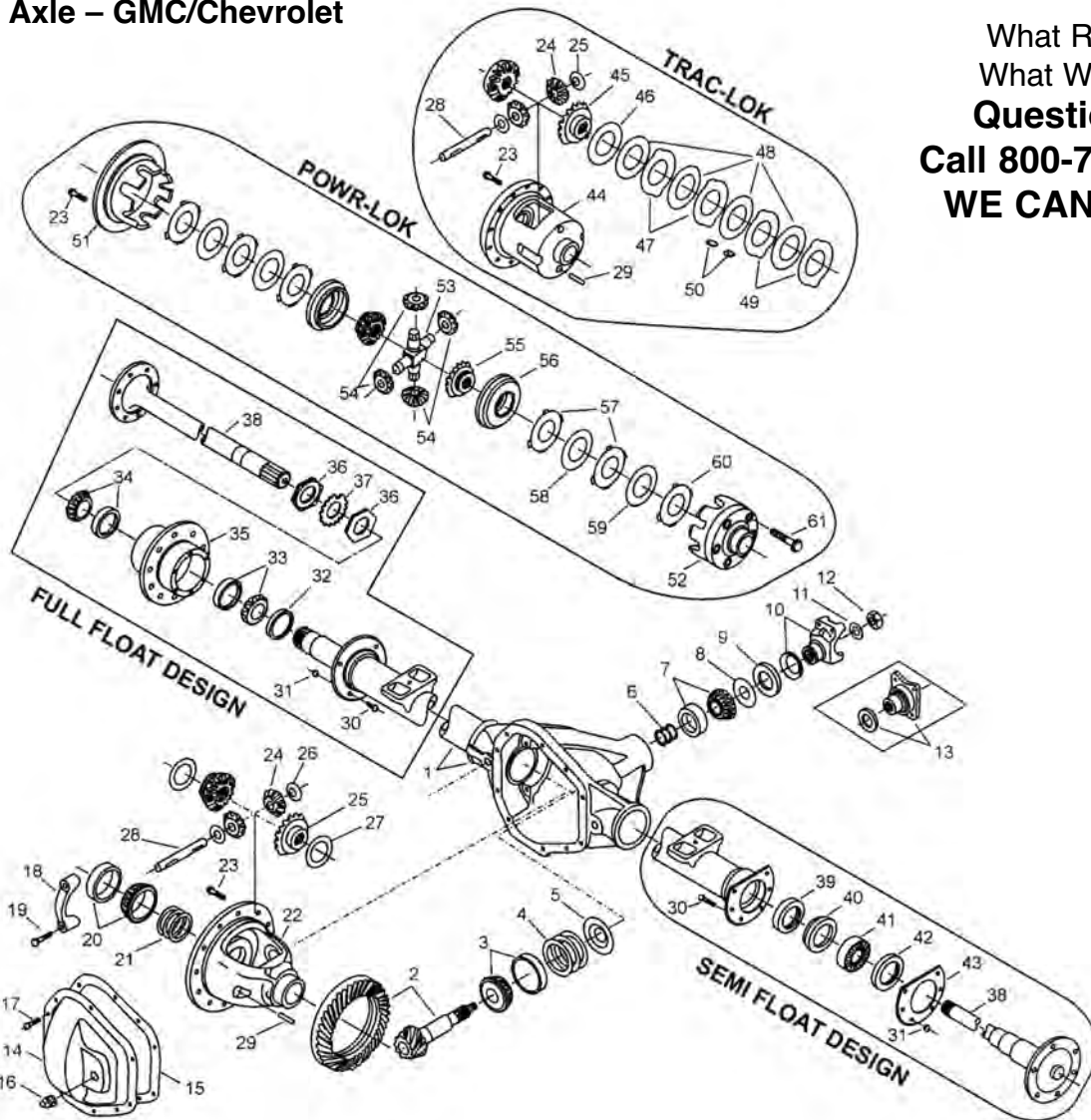
(1) See "Bill of Material Table" on next page

(2) See "Variable Parts Table" within this section

(3) Contact Vehicle Manufacturer

(4) Not Sold Separately

Model 60 Rear Axle – GMC/Chevrolet



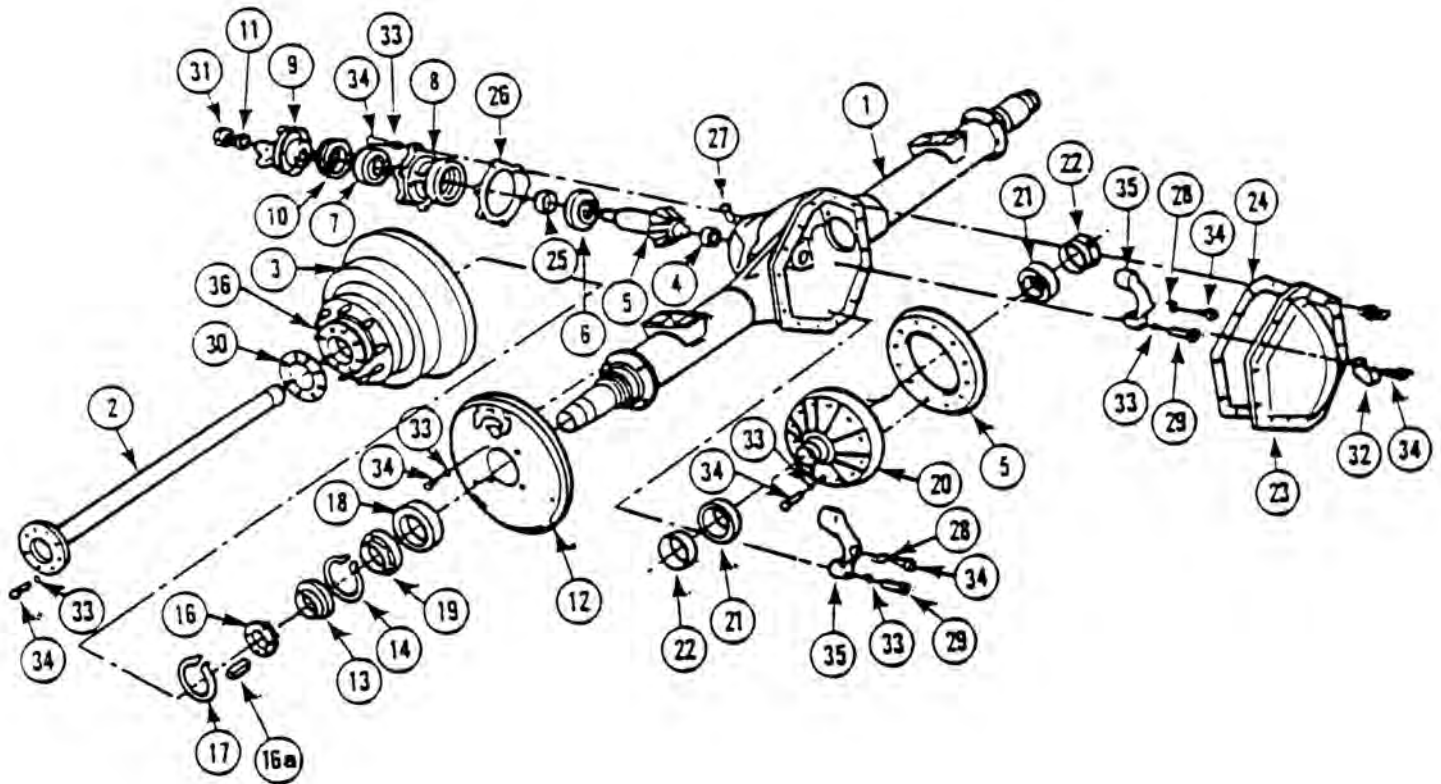
What Ratio?
What Works?
Questions?
Call 800-748-4269
WE CAN HELP

- | | | |
|--|-------------------------------------|--|
| 1 (1) Housing – Axle Service | 23 Bolt – Drive Gear | 45 Gear – Differential |
| 2 Drive Pinion & Gear Assembly | 24 Pinion – Differential | 46 Spacer – Diff. Gear (dished) |
| 3 KIT – Inner Pinion Bearing | 25 Gear – Differential | 47 Plate – Differential |
| 4 Shim – Drive Pinion | 26 Thrustwasher – Diff. Pinion | 48 Disc – Differential |
| 5 Baffle – Pinion Bearing | 27 Thrustwasher – Differential Gear | 49 Plate – Diff. (selective thick.) |
| 6 Shim – Pinion Bearing | 28 Shaft – Differential Pinion | 50 Clip – Differential Clutch Retainer |
| 7 KIT – Outer Pinion Bearing | 29 Lock – Differential Shaft | 51 Flange Half – Differential Case |
| 8 Slinger – Outer Pinion Bearing | 30 Brake Mounting Bolt | 52 Cap Half – Differential Case |
| 9 Seal – Pinion Oil | 31 Brake Mounting Nut | 53 Shaft – Differential |
| 10 (2) End Yoke Assembly | 32 Hub Seal | 54 Pinion – Differential |
| 11 Washer – Pinion Nut | 33 KIT – Inner Wheel Bearing | 55 Gear – Differential |
| 12 Pinion Nut | 34 KIT – Outer Wheel Bearing | 56 Ring – Differential |
| 13 (2) Companion Flange Assembly | 35 (2) Wheel Hub | 57 Plate – Differential |
| 14 Carrier Cover | 36 Spindle Nut | 58 Disc – Differential |
| 15 Carrier Cover Gasket / Sealant | 37 Lockwasher – Spindle Nut | 59 Disc – Differential (dished) |
| 16 Plug – Carrier Cover | 38 Shaft – Axle Flanged Drive | 60 Plate – Differential (dished) |
| 17 Bolt – Carrier Cover | 39 Seal – Inboard Shaft | 61 Bolt – Differential Case |
| 18 (2) Differential Bearing Cap | 40 Retainer Ring – Wheel Bearing | |
| 19 (2) Bolt – Differential Bearing Cap | 41 Wheel Bearing Assembly | |
| 20 KIT – Differential Bearing | 42 Seal – Outboard Shaft | |
| 21 Shim – Differential Bearing | 43 Retainer – Oil Seal | |
| 22 Case – Differential | 44 Case – Differential | |
- (1) Contact Vehicle Manufacturer
(2) See Spicer Driveline Catalog J300P Section 10
Check availability on all Powr-Lok parts before ordering



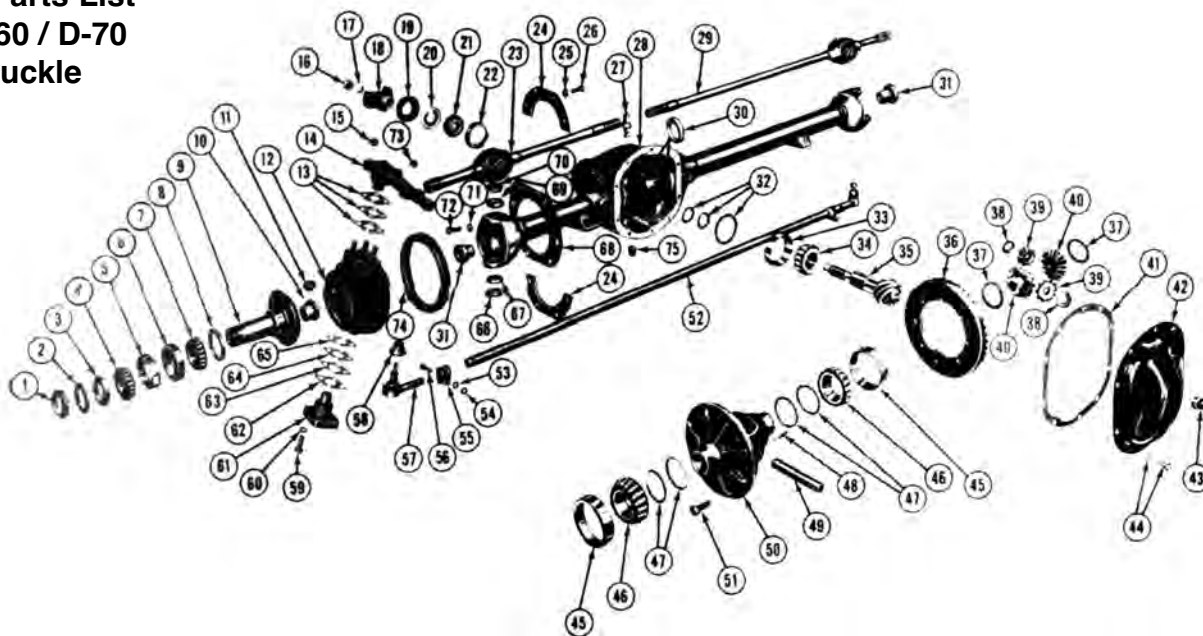
General Motors – 10.5" 14 bolt Corporate – FULL FLOAT

We Also Offer a Rugged Semi-Float 14-Bolt Rear with the Stock 6-Hole Wheel Pattern to Use with Your Stock Wheels. Also a New Full Float 6-Hole Pattern Conversion. Call For the Latest Info.



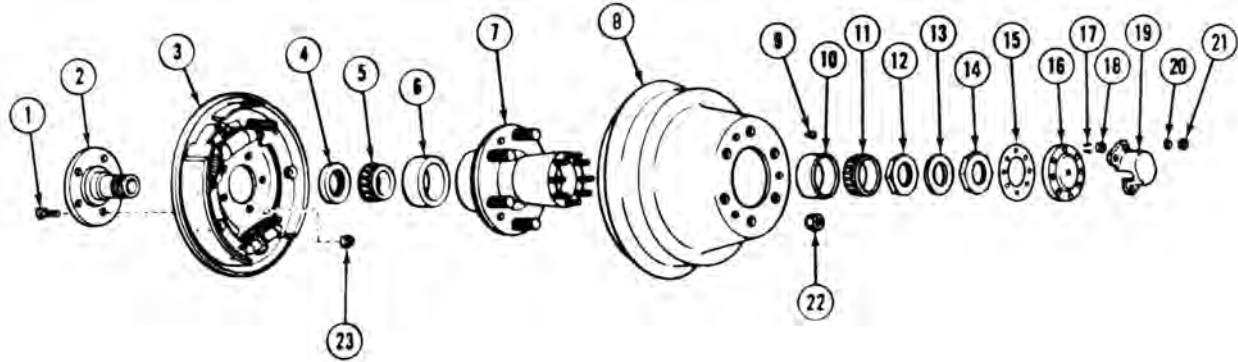
- | | | | | | |
|----|---------------------------------|-----|----------------------------|----|------------------------------|
| 1 | Housing, Rear Axle | 13 | Bearing, Rear Wheel Outer | 25 | Spacer, Pinion Shaft Bearing |
| 2 | Shaft, Rear Axle | 14 | Ring, Axle Shaft | 26 | Shim, Pinion Shaft |
| 3 | Drum, Rear Wheel | 16 | Nut, Hub Adjustment | 27 | Ventilator, Axle Housing |
| 4 | Bearing, Drive Pinion | 16a | Key, Adjustment Nut Lock | 28 | Lock, Adjustment Nut |
| 5 | Gear, Pinion | 17 | Key, Retaining Ring Lock | 29 | Bolt, Diff Cap |
| 6 | Bearing, Pinion (Inter) | 18 | Seal, Oil Deflector | 30 | Gasket, Axle Shaft |
| 7 | Bearing, Pinion (Front) | 19 | Bearing, Rear Wheel Inner | 31 | Nut, Prop Shaft |
| 8 | Retainer, Oil Seal | 20 | Case, Differential | 32 | Clip, Axle Cover |
| 9 | Flange, Prop Shaft | 21 | Bearing, Differential Side | 33 | Washer, Cover Bolts |
| 10 | Seal, Propshaft Pinion Flg Oil | 22 | Nut, Differential Side | 34 | Bolts, Cover (Hex) |
| 11 | Washer, Propshaft Pinion Flange | 23 | Cover, Axle Housing | 35 | Cap |
| 12 | Flange, brake Plate | 24 | Gasket, Axle Housing | 36 | Hub, Rear Wheel |

1 1/4 Ton Parts List M-715 / D-60 / D-70 Closed Knuckle



- | | | |
|---|--|---|
| 1 Nut, Axle Bearing, Rear | 19 Seal, Oil, Drive Pinion | 40 Kit, Repair, Differential |
| 2 Washer, Axle Bearing Nut, Rear and Front | 20 Slinger, Oil, Pinion Bearing Rear | Includes item 37-39, 48, 49 |
| 3 Same as Item 1 | 21 Cone and Rollers, Pinion Bearing Rear | Composed of: |
| 4 Set, Bearing, Cone and Roller w/Cup, Front Wheel, Outer | 22 Cup, Pinion Bearing, Rear | 2-Gear, Diff., Bevel Pinion |
| Composed Of: | 23 Shaft and U-Joint Assy., Right | 2-Gear, Diff., Pinion Mate |
| 1-Cone and Rollers, Assy. | 24 Retainer, Steering Knuckle, Oil Seal | 1-Pin, Pinion Gear Shaft Lock |
| 1-Cup | 25 Lockwasher, Included in Item 26 | 2-Washer, Thrust, Diff., Pinion Gear |
| 5 Cup, Wheel Bearing, Outer | 26 Bolt, w/Lockwasher Seal Retainer | 2-Washer, Thrust, Pinion Mate |
| Included in Item 4 | 27 Breather, Assy. | 41 Gasket, Gear Carrier Cover |
| 6 Cup, Wheel Bearing, Inner | 28 Housing, w/Tubes, Gear Carrier | 42 Cover, Gear Carrier |
| Including in Item 7 | 29 Shaft and U-Joints Assy., Left | 43 Plug, Filler |
| 7 Set, Bearing, Cone and Roller w/Cup, Front Wheel, Inner | 30 Seal, Axle Shaft, Inner | 44 Screw, w/Lockwasher |
| Composed Of: | 31 Guide, Axle Shaft, Inner | 45 Cup, Diff., Bearing |
| 1-Cone and Rollers, Assy. | 32 Shim Set, Pinion Bearing Adj. | 46 Cone and Rollers, Diff., Bearing |
| 1-Cup | Composed of: | 47 Shim Set, Diff., Bearing Adj. |
| 8 Seal, Front Wheel Bearing, Inner | 2-Shim (.003) | Composed of: |
| 9 Spindle, Assy. | 2-Shim (.005) | 2-Shim (.003) |
| 10 Bushing, Spindle | 2-Shim (.010) | 2-Shim (.005) |
| Included in Item 9 | 2-Shim (.010) | 2-Shim (.010) |
| 11 Plug, Filler, Steering Knuckle | 2-Shim (.003) | 2-Shim (.010) |
| 12 Knuckle, Steering | 2-Shim (.005) | 2-Shim (.030) |
| 13 Shim Set, king Pin, Bearing, Adj. | 2-Shim (.010) | 48 Pin, Pinion Gear Shaft Lock |
| Composed of: | 2-Shim (.030) | Included in Item 40 |
| 2-Shim (.003) | 33 Cup, Pinion Bearing, Front | 49 Shaft, Bevel Pinion Gear |
| 2-Shim (.005) | 34 Cone and Rollers, pinion Bearing, Front | Included in Item 40 |
| 2-Shim (.010) | 35 Gear and Pinion, drive | 50 Carrier |
| 2-Shim (.030) | 36 Gear, Drive, Included in Item 35 | 51 Bolt, Drive Gear |
| 14 Arm, Steering, w/King Pin | 37 Washer, thrust, Pinion Gear | 52 Rod, Tie Assy. |
| 15 Stud, Special (Steering Arm to Knuckle) | Included in Item 40 | 53 Lockwasher 1/2" (Tie Rod Clamp) |
| 16 Nut, Drive, Pinion | 38 Washer, Thrust, Pinion Mate | 54 Nut, 1/2-20 Hex (Tie Rod Clamp Bolt) |
| 18 Yoke, Companion, Assy. | Included in Item 40 | 55 Clamp, Tie Rod |
| | 39 Gear, Differential, Bevel, Pinion | 56 Bolt, 1/2-20x2.25 (Tie Rod Clamp) |
| | Included in Item 40 | |

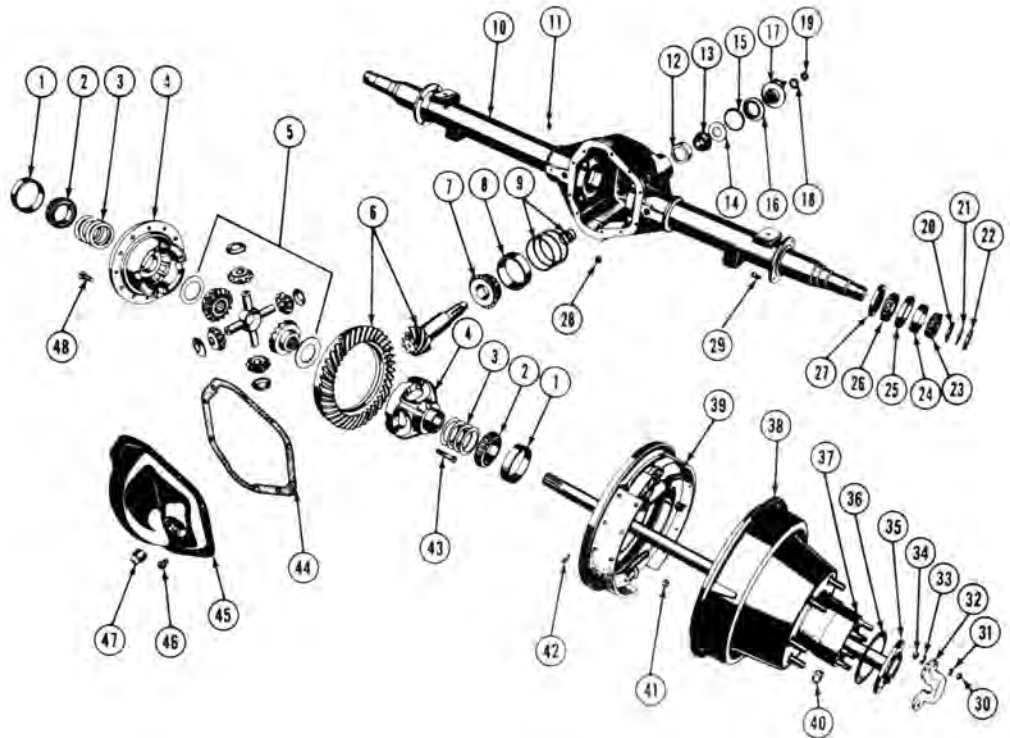
1 1/4 Ton Front Wheel – DANA 70 – M-715



- | | | | | | |
|---|--------------------------------------|----|----------------------------------|----|----------------------------|
| 1 | Screw | 9 | Screw | 17 | Washer |
| 2 | Same as Figure 25, Item 9 | 10 | Same as Figure 25, Item 5 | 18 | Nut |
| 3 | Brake, Front, Left, Assy. 13 x 2 1/2 | 11 | Same as Figure 25, Item 4 | 19 | Cap |
| 4 | Same as Figure 25, Item 8 | 12 | Nut, Wheel, Bearing, Adj., Outer | 20 | Washer |
| 5 | Same as Figure 25, Item 7 | 13 | Lock, Wheel, Bearing, Adj., Nut | 21 | Nut |
| 6 | Same as Figure 25, Item 7 | 14 | Same as Figure 12 | 22 | Same as Figure 25, Item 40 |
| 7 | Hub and By, Front, Assy | 15 | Gasket, Flange, Axle, Shaft | 23 | Nut |
| 8 | Drum, Brake, Front, Assy | 16 | Flange, Axle Shaft | | |

1 1/4 Ton Rear Axle – DANA 70 – M-715

- 1 Cup, Diff., Bearing
- 2 Cone and rollers, Diff., Bearing
- 3 Set, Gasket and Shim, Diff
Includes Item 44
2-Shim (.003)
2-Shim (.005)
2-Shim (.010)
1-Gasket, Axle housing Cover
- 4 Case, Differential
- 5 Kit, Repair, Diff.
- 6 Kit, Drive Gear and Pinion (47-8T)
- 7 Cone and Roller, Pinion Bearing, Rear
- 8 Cup, Pinion BEaring, Rear spring
- 9 Spring
- 10 Gear, Housing and Tube Assy.
- 11 Valve, Vent
- 12 Cup, Pinion Bearing, Front
- 13 Cone and Rollers, Pinion Bearing, Front
- 14 Slinger, Oil, Pinion Bearing, Rear
- 15 Gasket, Drive Pinion, Oil Seal
- 16 Oil Seal, Pinion Bearing
- 17 Yoke End, J-Joint, Assy.
- 18 Washer, Drive Pinion Nut
- 19 Nut, Drive Pinion
- 20 Nut, J-Wheel Bearing
- 21 Lock, Wheel Bearing Nut
- 22 Same as Item 20
- 23 Set, Cone and Rollers w/Cup Wheel, Rear Outer
- 24 Cup, Wheel Bearing, Outer
Included in Item 23
- 25 Cup, Wheel Bearing, Inner
Included in Item 23
- 26 Set, Cone and Rollers, w/CupRear Wheel, Inner
- 27 Seal, Rear Wheel, Hub, Inner
- 28 Plug, Drain, Magnetic 1/2-20x1, Special



- | | | | |
|----|--|----|---|
| 29 | Bolt, Special, Back Plate to Axle | 39 | Brake, Rear, Right, Assy. 13x2 1/2 |
| 30 | Nut, Hex, 7/16x20 | 40 | Nut, Hex, 5/16-18 R.H. Hub to Drum |
| 31 | Lockwasher, Lifting Bracket to Drum, 7/16 External | 41 | Locknut, 1/2-20 |
| 32 | Bracket, Lifting | 42 | Washer |
| 33 | Spacer, Lifting Bracket, Front and Rear | 43 | Bolt |
| 34 | Bushing, Axle Shaft, Drive, Flange, Rear | 44 | Gasket, Gear Carrier Cover |
| 35 | Retainer | 45 | Cover, Gear Carrier |
| 36 | Gasket, Axle Shaft, Drive, Flange, Rear | 46 | Screw & Lockwasher Assy. Cover to Housing |
| 37 | Hub, Included in Item 30 | 47 | Plug, Filler |
| 38 | Hub and Bearing, Rear, Assy. | 48 | Bolt, Drive Gear, Included in Item 6 |

2 1/2 Ton Front Axle

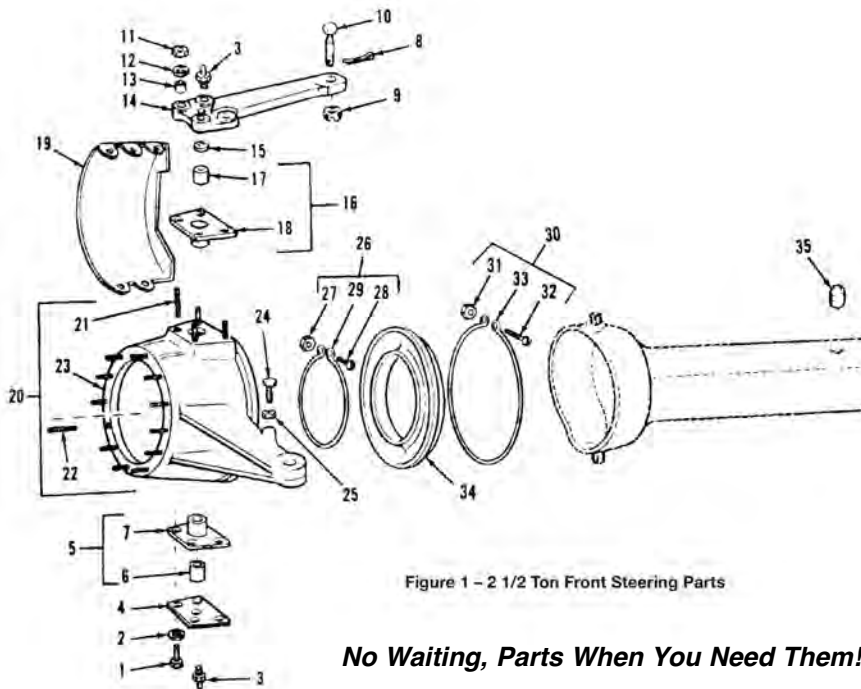


Figure 1 - 2 1/2 Ton Front Steering Parts

No Waiting, Parts When You Need Them!

1	F250GG	Bolt
2	F250K	Lock Washer
3	F250M	Fitting
4	F250HH	Plate
5	F250FF	Sleeve & Bushing Assy.
6	F250S	Bushing
7	Call	Sleeve
8	F250P	Cotter Pin
9	F250Q	Nut-Castellated
10	F250N	Stud-Ball Type
11	F250L	Nut
12	F250K	Fitting
13	F250J	Ball
14	F250HH	Pin
15	F250R	Nut
16	F250T	Sleeve & Bushing Assy.
17	F250S	Bushing
18	Call	Sleeve
19	F250FF	Guard
20	F250GR	Knuckle & Stud Assy. Right
20	F250GL	Knuckle & Stud Assy. Left
24	F250DD	Bolt
25	F250DD-1	Nut
26	F250AA	Inner Boot Clamp Assy.(sm)
30	F250BB	Outer Boot Clamp Assy.(lg)
34	F250Y	Knuckle Boot
35	Call	Relief Valve

2 1/2 Ton Front Steering

1	F250AD	Bolt
2	F250AE	Lock Washer
3	F250AB	Drive Flange w/Plug
4	Call	Plug Expansion
5	Call	Flange
6	F250AF	Flange Gasket
7	F250ZZ	Nut
8	F250AJ	Washer
9A	F250XX	Race
9B	F250XX-1	Bearing
10	F250WW-1	Hub & Drum Assy.
11	F250SS	Nut-Self Locking
12	F250AG	Lock Washer
13	F250AH	Cover-Inspection
14	F250UU	Bolt-Ribbed Shoulder
15	F250TT	Adaptor-Brake Drum
16	F250AK	Nut-Single Ball Seat
17	F250QQ	Bolt-Ribbed Shoulder
18	F250WW	Hub
19	F250YY	Brake Drum
20A	F250VV	Race
20B	F250VV-1	Bearing
21	F250SS	Nut
22	F250RR	Lock Washer
23	F250PP	Defector
24	F250NN	Plate Assy.
25	F250LL-1	Spindle Assy.
26	F250MM	Seal-Inner Hub Bearing
27	F250LL-2	Spindle-Steering
28	F250KK	Bearing
29	F250LL	Spindle
30A	F250SSS	Shaft Assy. Short
30B	F250SSL	Shaft Assy. Long
31	F250WRO	Thrust Washer
32	Call	Retainer

33	Call	Bearing
34	F250STB	Shaft Assy.
35	F250UJ	Center Cross
36	F250-INL	Shaft-Long, Left Hand
36	F250-INS	Shaft-Short, Right Hand
37	F250SR	Seal Assy.-Axle
38	F250CC	Seal
39	F250V	Retainer
40	F250WRI	Thrust Washer

Parts Always in Stock, Same Day Shipping

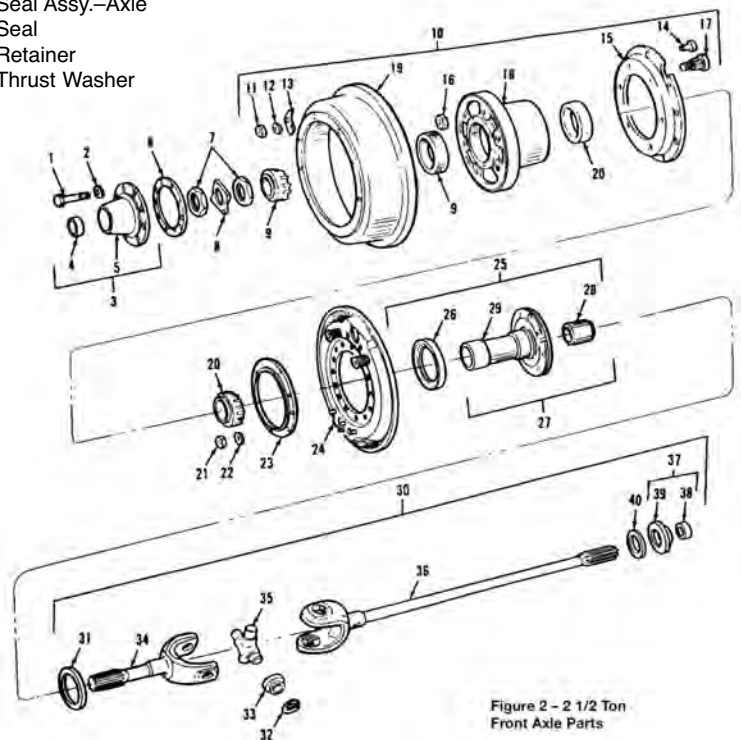
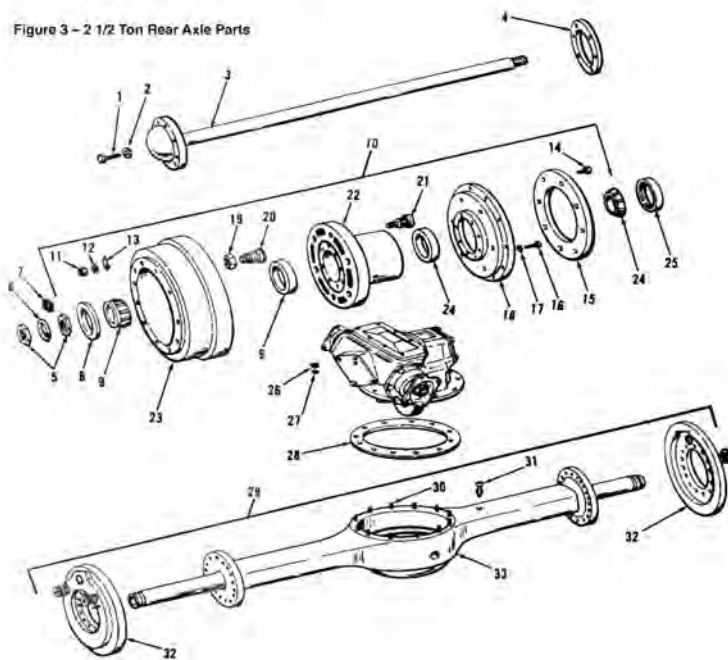


Figure 2 - 2 1/2 Ton Front Axle Parts

2 1/2 Ton Rear Axle

Figure 3 - 2 1/2 Ton Rear Axle Parts



**Late Model Machined Rear Axle Shafts.
Stronger, Newer, Same Price.**

1	R250A	Bolt	18	R250P	Adaptor Assy.
2	R250B	Lock Washer	19	R250L	Nut-Single Ball
3	R250C	Axle Shaft			Seat
4	R250D	Shaft Gasket	20	Call	Nut-Cap
5	R250E	Nut	21	R250N	Bolt-Ribbed
6	R250KK	Washer-Key			Shoulder
7	Call	Cork	22	R250M	Hub
8	R250F	Seal-Outer Hub	23	R250K	Brake Drum
		Bearing	24A	R250S	Race
9A	R250S	Race	24B	R250T	Inner Hub Bearing
9B	R250JJ	Bearing	25	R250U	Seal-Inner Hub
10	R250M-1	Hub & Drum Assy.			Bearing
11	R250G	Nut-Self Locking	26	Call	Nut
12	R250H	Lock Washer	27	Call	Washer
13	R250JJ	Cover-Inspection	28	Call	Gasket
14	R250R	Bolt-Ribbed	29	Call	Housing Assy.
		Shoulder	30	R250X	Stud
15	R250Q	Deflector	31	Call	Valve
16	R250A	Bolt	32	R250X	Plate Assy.
17	R250B	Lock Washer	33	Call	Housing

2 1/2 Ton Rear Brakes

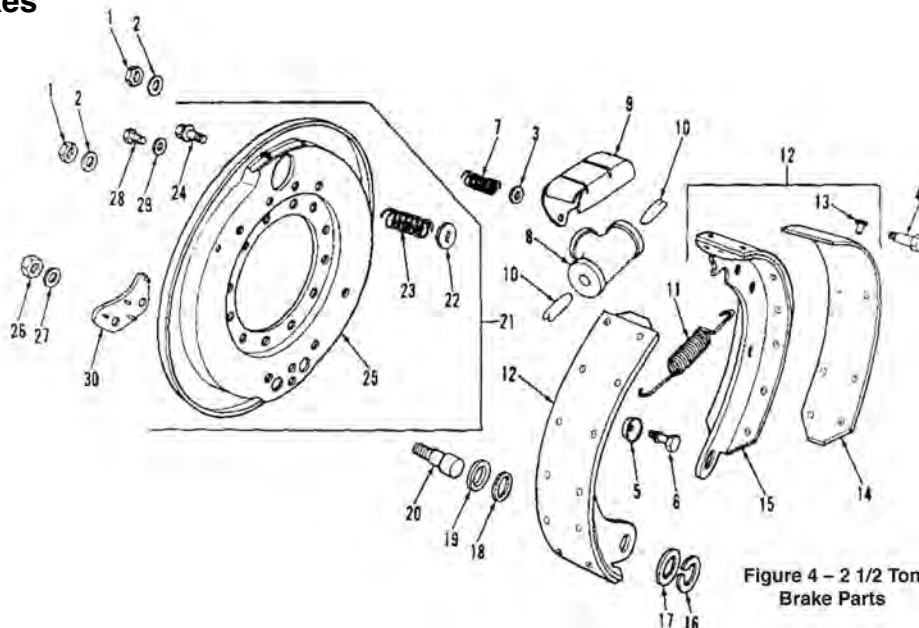


Figure 4 - 2 1/2 Ton
Brake Parts

1	Call	Nut	9	B250G	Shield	20	B250U	Pin-Anchor
2	Call	Lock Washer	10	B250J	Rod	21	B250E	Deflector/Shield Assy.
3	Call	Washer, Upper	11	B250L	Spring-Extension	26	B250X	Nut
4	Call	Pin-Long	12	B250K	Brake Shoe Assy.	27	B250Y	Lock Washer
5	Call	Washer, Lower	16	B250P	Retainer-Slotted	28	B250Z	Screw Cap
6	Call	Pin-Short	17	B250Q	Washer	29	Call	Lock Washer
7	Call	Spring-Compression	18	B250S	Washer-Recessed	30	Call	Anchor
8	B250H	Wheel Cylinder Assy.	19	B250T	Washer-Felt			

Wheel Disc Brakes, Pinion Brakes. CALL WITH YOUR NEEDS!

2 1/2 Ton Differential Assy.

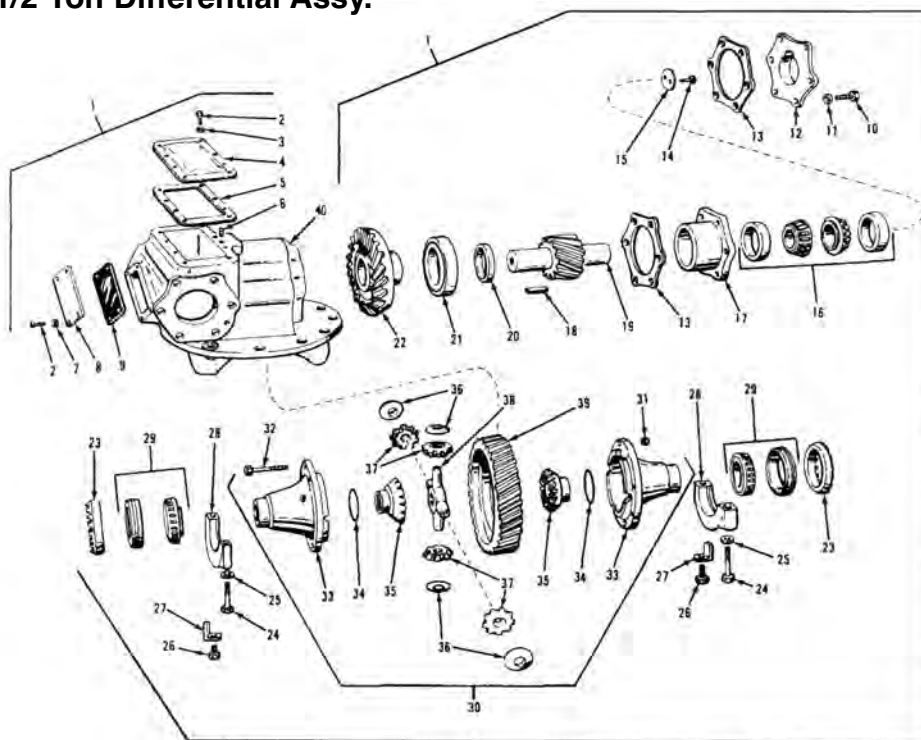


Figure 5 - 2 1/2 Ton Differential Assy. Parts

Lockers, Easy to Install, No Shimming

1	D250VVD	Differential w/Carrier Assy.	6	D250J	Set Screw
2	D250A	Screw Cap	7	D250HH-1	Washer-Flat
3	D250B	Lock Washer	8	D250D	Cover Assy.
4	D250H	Cover	9	D250E	Gasket
5	D250E	Gasket	10	D250X	Screw

11	D250Y	Lock Washer
12	D250W	Cover
13	D250R	Shim
14	D250Z	Screw
15	D250V	Plate
16	D250U	Bearing Assy.
17	D250S	Cage
18	D250AA	Key-Machine
19	D250Q	Pinion
20	D250P	Retaining Ring
21	D250N	Bearing-Roller, Cylindrical
22	D250L	Gear
23	D250EE	Nut
24	D250HH	Screw
25	D250BHH-1	Washer-Flat
26	D250JJ	Bolt
27	D250KK	Washer-Key
28	Call	Cap Assy.
29A	D250FF	Race
29B	D250GG	Bearing
31	D250XX	Nut-Slotted
32	D250TT	Bolt
33	D250MM	Cap Assy.
34	D250UU	Washer-Thrust
35	D250NN	Gear
36	D250QQ	Washer-Thrust
37	D250SS	Pinion Assy.
38	D250VV	Spider
39	D250WW	Gear
40	D250F	Carrier
N/A	D250VV-1	Spider Gear Set (not shown)

2 1/2 Ton Differential

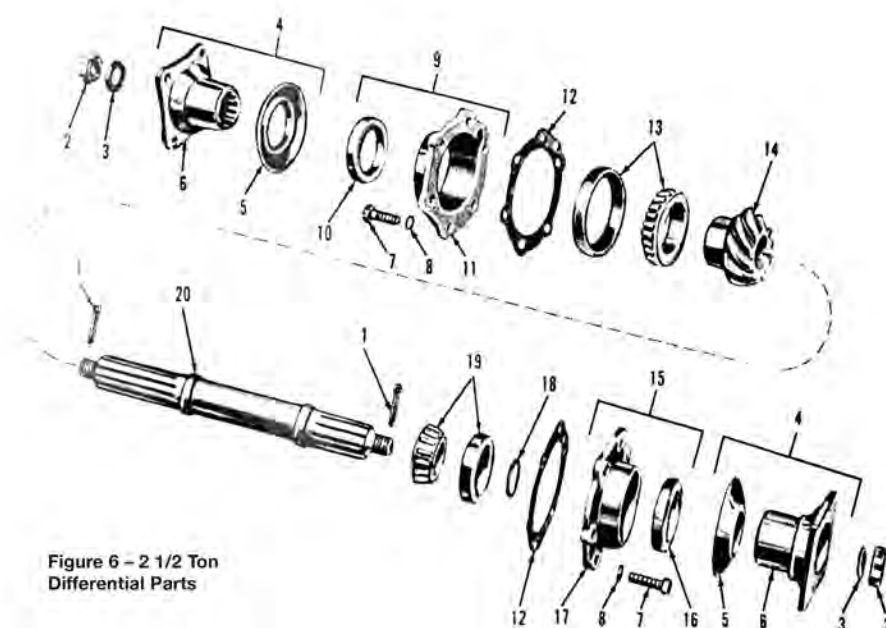


Figure 6 - 2 1/2 Ton Differential Parts

1	C250J	Cotter Pin
2	C250A	Nut-Slotted
3	C250B	Washer-Flat
4	C250C	Flange w/Deflector Assy.
5	C250C-2	Deflector
6	C250C-1	Flange
7	C250Q	Screw Cap
8	C250R	Washer-Flat
9	C250P	Retainer Assy.
10	C250D-1	Seal
11	C250D	Retainer
12	C250E	Shim
13A	C250F	Race
13B	C250G	Bearing
14	C250H	Pinion
15	C250P	Retainer Assy.
16	C250D-1	Seal
17	C250D	Retainer
18	C250R	Spacer
19A	C250M	Race
19B	C250L	Bearing
20	C250K	Shaft

5 Ton Differential Assy.

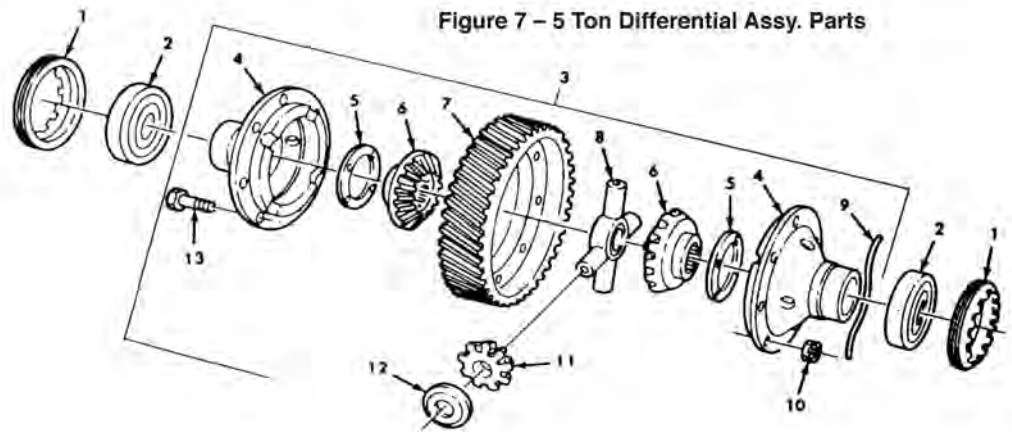
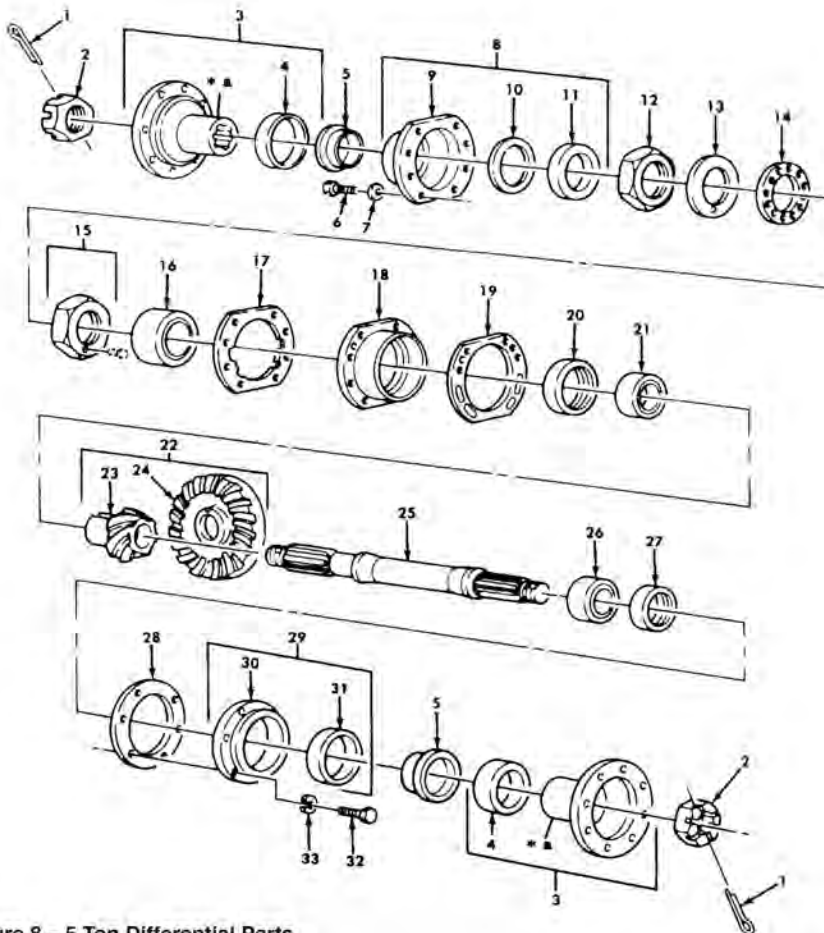


Figure 7 – 5 Ton Differential Assy. Parts

1	7346818	Ring	8	8758206	Spider
2	712699	Bearing	9	N/A	Wire
3	8758285	Differential Gear	10	7346823	Nut
4	8758252	Carrier	11	8675772	Gear
5	8758201	Washer-Thrust	12	8758200	Washer-Thrust
6	7346959	Gear	13	7346822	Bolt
7	7346824	Gear			

Detroit Lockers Available!

5 Ton Differential

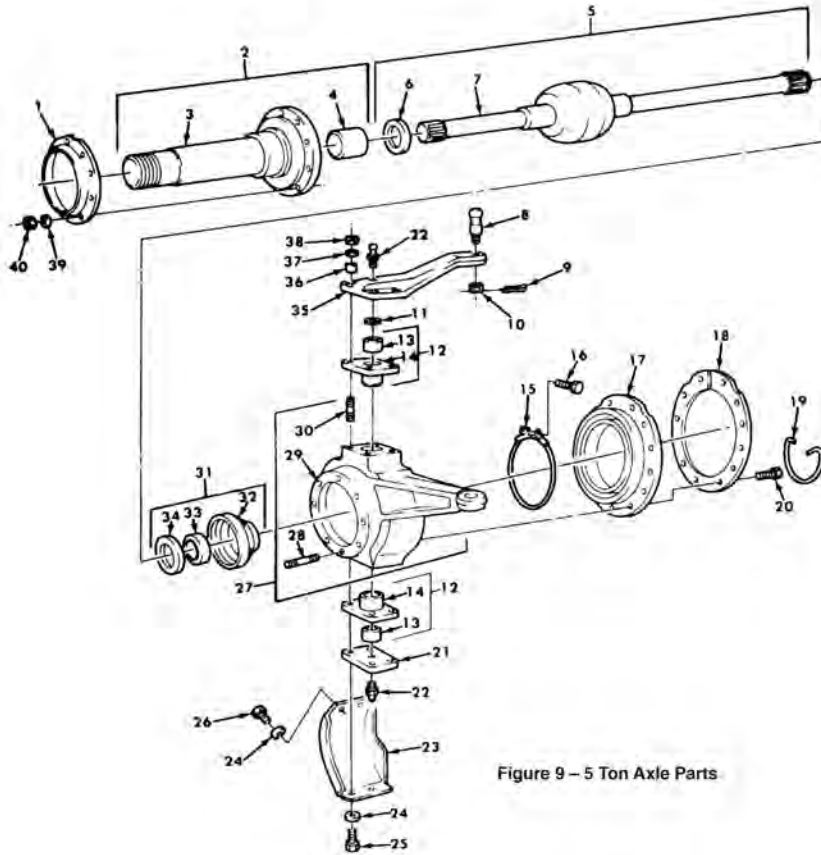


1	MS24665-361	Cotter Pin
2	7346893	Nut-Slotted
3	A320G1957	Flange
4	7535048	Defector
5	5705699	Sleeve Repair Kit
6	180178	Cap Screw
7	50-4-18-17-7	Washer
8	7346897	Cover Assy.
9	8758251	Cover
10	10900396	Gasket
11	11669023	Seal
12	7979263	Nut
13	R500C	Nut
14	R500B	Washer-Key
15	R500A	Nut
16	703189	Bearing
17	7346886	Gasket
18	8758202	Plate
19	Call	Shim
20	Call	Collar
21	713536	Bearing
22	MPS516	Gear Set
23	8758204	Pinion Gear
24	8758205	Ring Gear
25	7346892	Shaft-Shoulder
26	712148	Bearing
27	7346894	Bearing
28	7346896	Gasket
29	7346895	Cap & Seal Assy.
30	8758207	Cap
31	11669023	Seal
32	MS90728-61	Cap Screw
33	MS35338-46	Lock Washer

Figure 8 – 5 Ton Differential Parts

Bearings & Seals Ready to Ship

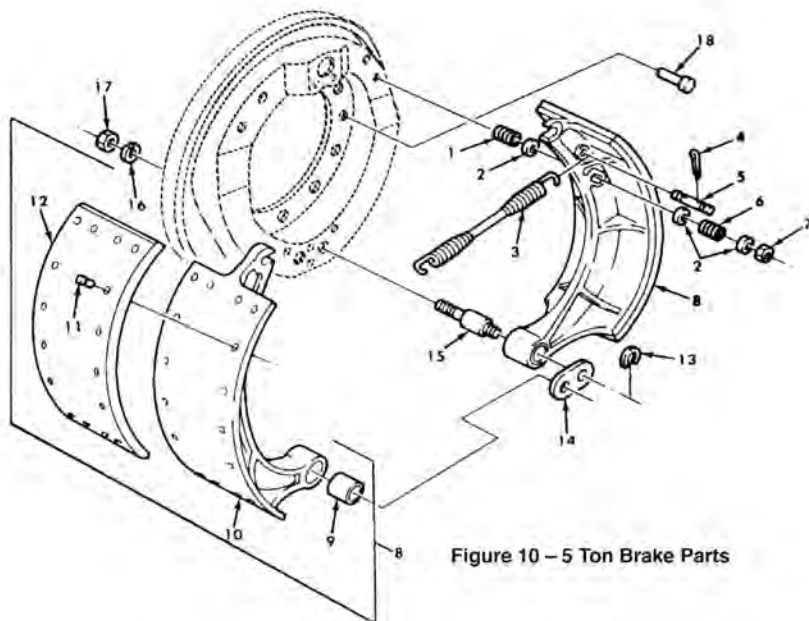
5 Ton Axles



1	3286G163	Deflector	6	7346986	Washer	10	MS35692-69	Nut-Slotted
2	F500XX	Spindle Assy.	7	Call	Axle Shaft-Left/Right	11	F500R	Washer
3	8758276	Spindle	8	7346980	Stud-Left	12	F500Q	Sleeve Assy.
4	F500WW	Bearing	8	11664599	Stud-Right	13	F500Y	Bearing
5	Call	Axle Shaft Assy.	9	MS24665-357	Cotter Pin	14	8758253	Sleeve
						15	12300575	Clamp Assy.
						17	F500EE	Knuckle Boot
						18	F500DD	Ring
						19	Call	Wire
						20	MS35265-94	Screw
						21	F500LL	Plate
						22	MS15003-1	Fitting
						23	F500KK	Guard-Left
						23	F500KK	Guard-Right
						24	MS35338-50	Lock Washer
						25	MS90728-165	Cap Screw
						26	MS90728-160	Cap Screw
						27	F500NL	Knuckle Assy.-Left
						27	F500NR	Knuckle & Stud Assy.-Right
						28	7346811	Stud
						29	8758352	Knuckle-Left
						29	8758352-1	Knuckle-Right
						30	7346900	Stud
						31	7346951	Seal Assy.
						32	8758268	Retainer
						33	F500RR	Seal
						34	7346986	Washer
						35	11664597	Steering Arm-Left
						35	11664598	Steering Arm-Right
						36	7346812	Bushing
						37	MS35335-39	Lock Washer
						38	7346813	Nut
						39	MS35335-38	Lock Washer
						40	MS51968-17	Nut

Figure 9 - 5 Ton Axle Parts

5 Ton Brakes

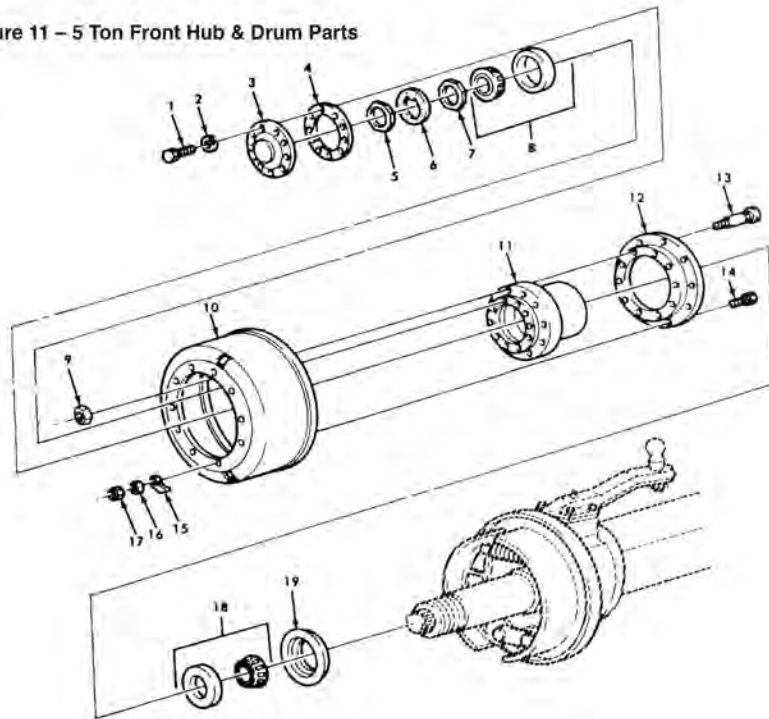


1	11663025	Spring-Compression	10	8758318	Shoe
2	11663232	Washer-Recessed	11	10896748	Rivet
3	7979339	Spring-Extension	12	11662833	Lining
4	MS24665-283	Cotter Pin	13	7979332	Washer-Slotted
5	7979330	Pin-Grooved	14	7979340	Link-Anchor
6	11663233	Spring Compression	15	Call	Pin-Shoulder
7	11663236	Nut-Self Locking	16	MS35338-51	Lock Washer
8	5705700	Brake Shoe Set	17	7207919	Nut
9	7979280	Bushing	18	7979351	Rivet

Figure 10 - 5 Ton Brake Parts

5 Ton Front Hub & Drum Assy.

Figure 11 – 5 Ton Front Hub & Drum Parts



1	10896726	Bolt
2	MS35338-48	Lock Washer
3	F500C	Flange
4	F500D	Gasket
5	F500E	Nut
6	F500F	Washer
7	7979308	Nut
8	F500H	Bearing
8	F500J	Race
9	Call	Nut
10	7409394	Brake Drum
11	F500G	Hub
12	7409390	Adapter
13	F500N	Bolt-Ribbed
14	7979179	Bolt-Ribbed
15	1107F84	Cover
16	MS35338-47	Lock Washer
17	MS51968-11	Nut
18	F500K	Bearing
18	F500J	Race
19	F500L	Seal

5 Ton Rear Hub & Drum Assy.

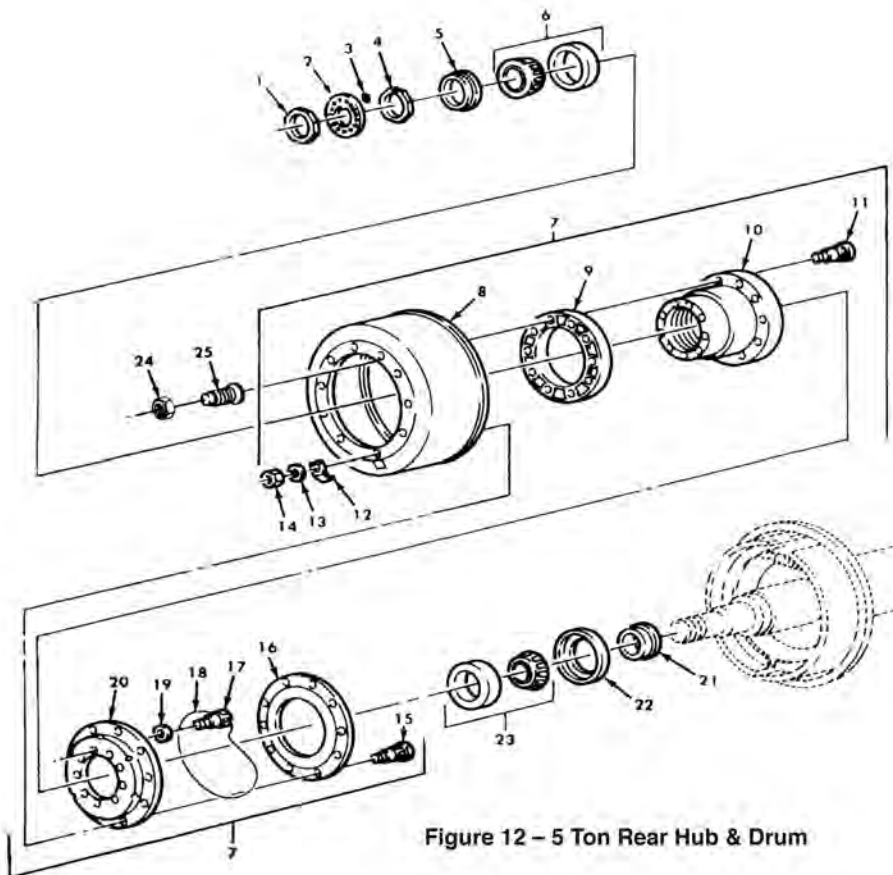
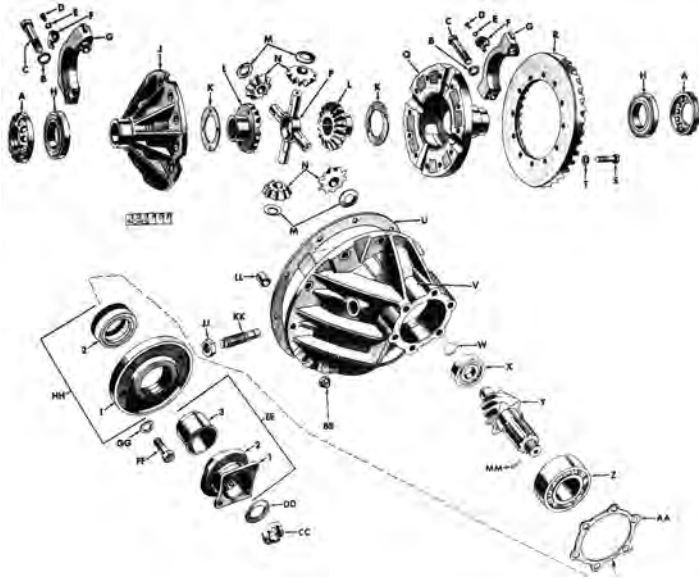


Figure 12 – 5 Ton Rear Hub & Drum

1	R500A	Nut
2	R500B	Washer
3	8758266	Gasket
4	R500C	Nut
5	R500D	Seal
6	R500L	Bearing
6	R500F	Race
7	Call	Hub & Drum Assy.
8	R500H	Brake Drum
9	3280-A1977	Spacer
10	R500G	Hub
11	R500N	Stud
12	7979315	Cover
13	MS35338-47	Lock Washer
14	MS51968-11	Nut
15	7979179	Bolt-Ribbed
16	R500K	Slinger
17	10896726-1	Bolt
18	N/A	Wire
19	MS35338-48	Lock Washer
20	R500J	Plate
21	7409553	Ring
22	R500M	Seal
23	R500E	Bearing
23	R500F	Race
24	Call	Nut
25	MS53068-1	Cap Nut
26	MS53068-2	Cap Nut

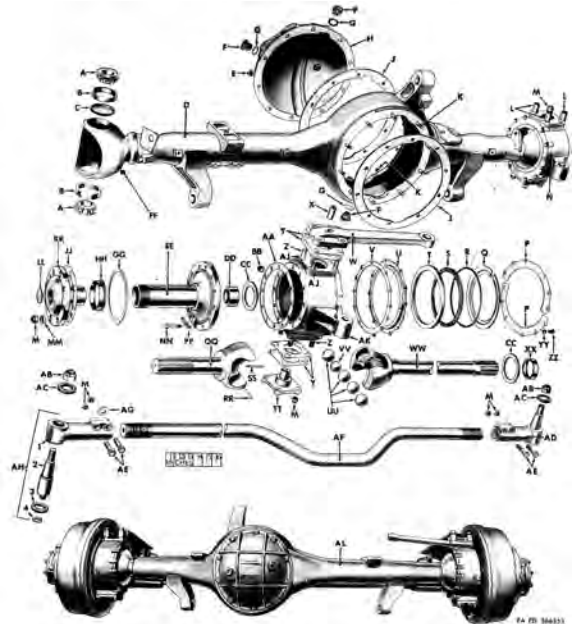
2.5 Ton GMC Differential



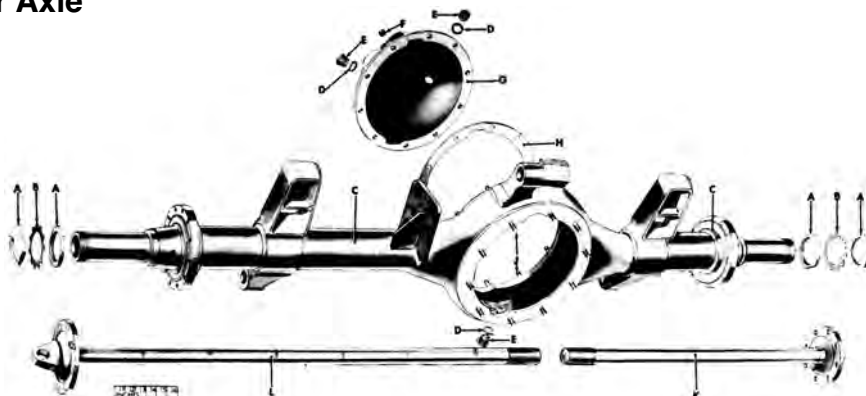
GD-A	Nut	GD-W	Clip
GD-B	Washer	GD-X	Bearing
GD-C	Bolt	GD-Y	Pinion Gear
GD-D	Screw	GD-Z	Bearing
GD-E	Washer	GD-AA	Gasket
GD-F	Keeper	GD-BB	Nut
GD-G	Jornal	GD-CC	Nut
GD-H	Bearing	GD-DD	Washer
GD-J	Carrier	GD-EE	Flange, Assy
GD-K	Shim		1-Flange
GD-L	Gear		2-Deflector
GD-M	Shim		3-Sleeve
GD-N	Gear	GD-FF	Bolt
GD-P	Cross Shaft	GD-GG	Washer
GD-Q	Carrier	GD-HH	Seal, Assy
GD-R	Ring Gear		1-Retainer
GD-S	Bolt		2-Seal
GD-T	Washer	GD-JJ	Nut
GD-U	Gasket	GD-KK	Pin
GD-V	Housing	GD-LL	Dowell

2.5 Ton GMC Front Axle

GF-A	Cone	GF-U	Retainer	GF-PP	Washer
GF-B	Cup	GF-V	Gasket	GF-QQ	Shaft
GF-C	Retainer	GF-W	Arm	GF-RR	Pin
GF-D	Housing, Assy	GF-X	Spacer	GF-SS	Pin
GF-E	Nut	GF-Y	Shim	GF-TT	Trunnion
GF-F	Plug	GF-Z	Stud	GF-UU	Ball
GF-G	Gasket	GF-AA	Gasket	GF-VV	Ball
GF-H	Cover	GF-BB	Plug	GF-WW	Shaft
GF-J	Gasket	GF-CC	Washer	GF-XX	Seal
GF-K	Stud	GF-DD	Bearing	GF-YY	Washer
GF-L	Spacer	GF-EE	Knuckle	GF-ZZ	Screw
GF-M	Nut	GF-FF	Fitting	GF-AB	Nut
GF-N	Support	GF-GG	Shield	GF-AC	Seal
GF-P	Retainer	GF-HH	Seal, Assy	GF-AD	End, Assy
GF-Q	Retainer	GF-JJ	Gasket	GF-AE	Screw
GF-R	Spring	GF-KK	Flange	GF-AF	Rod
GF-S	Seal	GF-LL	Plug	GF-AG	Lock
GF-T	Seal	GF-MM	Wedge	GF-AH	End
		GF-NN	Bolt		

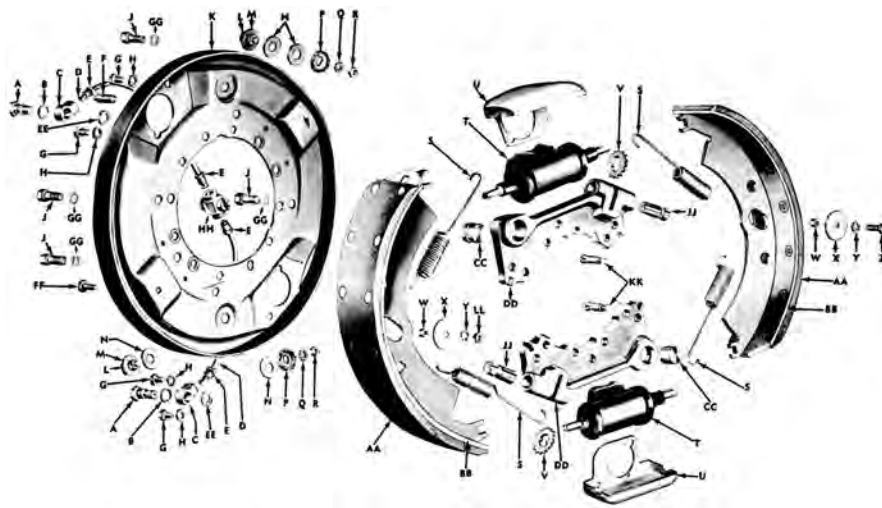


2.5 Ton GMC Rear Axle



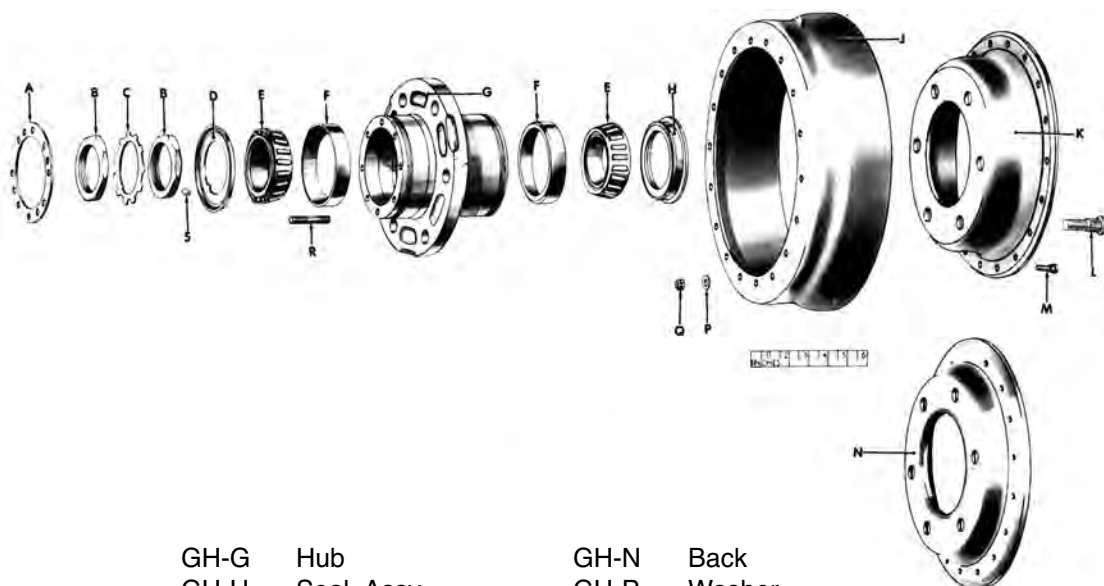
GR-A	Nut
GR-B	Lock
GR-C	Housing
GR-D	Gasket
GR-E	Plug
GR-F	Nut
GR-G	Cover
GR-H	Gasket
GR-J	Stud
GR-K	Shaft
GR-L	Shaft

2.5 Ton GMC Brakes



GB-A	Bolt	GB-L	Stud	GB-W	Sleeve	GB-GG	Fitting
GB-B	Washer	GB-M	Washer	GB-X	Washer	GB-HH	Screw
GB-C	Fitting	GB-N	Washer	GB-Y	Washer	GB-JJ	Nut
GB-D	Tubing	GB-P	Gear	GB-Z	Screw	GB-KK	Washer
GB-E	Nut	GB-Q	Washer	GB-AA	Lining	GB-LL	Pin
GB-F	Screw	GB-R	Nut	GB-BB	Shoe, Assy.	GB-MM	Washer
GB-G	Bolt	GB-S	Spring	GB-CC	Pin	GB-NN	Nut
GB-H	Washer	GB-T	Cylinder, Assy.	GB-DD	Block		
GB-J	Screw	GB-U	Shield	GB-EE	Gasket		
GB-K	Plate, Assy.	GB-V	Wheel	GB-FF	Bolt		

2.5 Ton GMC Hub & Drum Assy.



GH-A	Gasket	GH-G	Hub	GH-N	Back
GH-B	Nut	GH-H	Seal, Assy.	GH-P	Washer
GH-C	Lock	GH-J	Drum	GH-Q	Nut
GH-D	Seal, Assy.	GH-K	Back	GH-R	Stud
GH-E	Cone	GH-L	Stud	GH-S	Seal
GH-F	Cup	GH-M	Stud		



ARMY TRUCK SPARES

Filters

119952K OIL FILTER
MB, M38, M38A1, M37

909335 OIL FILTER
CJ2A, CJ3A

11630417 OIL FILTER
M151

261F FUEL FILTER
M35, 2.5 TON TRUCK

8371514 FUEL FILTER
M35, 2.5 TON TRUCK

8748329 OIL FILTER
M35, 2.5 TON TRUCK

12356666 FUEL FILTER
5 TON TRUCK CUMMINS ENGINE

12342870 AIR FILTER
MILITARY HUMVEE

11604545 AIR FILTER
5 TON TRUCK, W/CUMMINS M809

7737491 AIR FILTER
5 TON MULTIFUEL TRUCK

158139 OIL FILTER
5 TON TRUCK CUMMINS ENGINE

12339911 AIR CLEANER ASSY.
MILITARY HUMVEE

10921373 AIR FILTER
M35, 2.5 TON TRUCK

5579680 OIL FILTER
MILITARY HUMVEE





Radiator Hoses

11664468 LOWER RADIATOR HOSE
5 TON TRUCK MULTI-FUEL ENGINE



805820 UPPER RADIATOR HOSE
M38A1



805821 LOWER RADIATOR HOSE
M38A1



10938255 RADIATOR HOSE
5 TON TRUCK M800, NHC250



10872023 LOWER RADIATOR HOSE
M35A2



Body Parts

7005417 INNER WINDSHIELD FRAME COMPLETE
WITH GLASS, LATCH AND HINGE
2.5 TON, 5 TON, M37 MILITARY TRUCKS



MS35840-1 RADIATOR CAP
2.5 TON TRUCK



MS35645-1 FUEL CAP
2.5 TON TRUCK



7071100 CLAMP
F250-BB
2.5 TON TRUCK, INNER



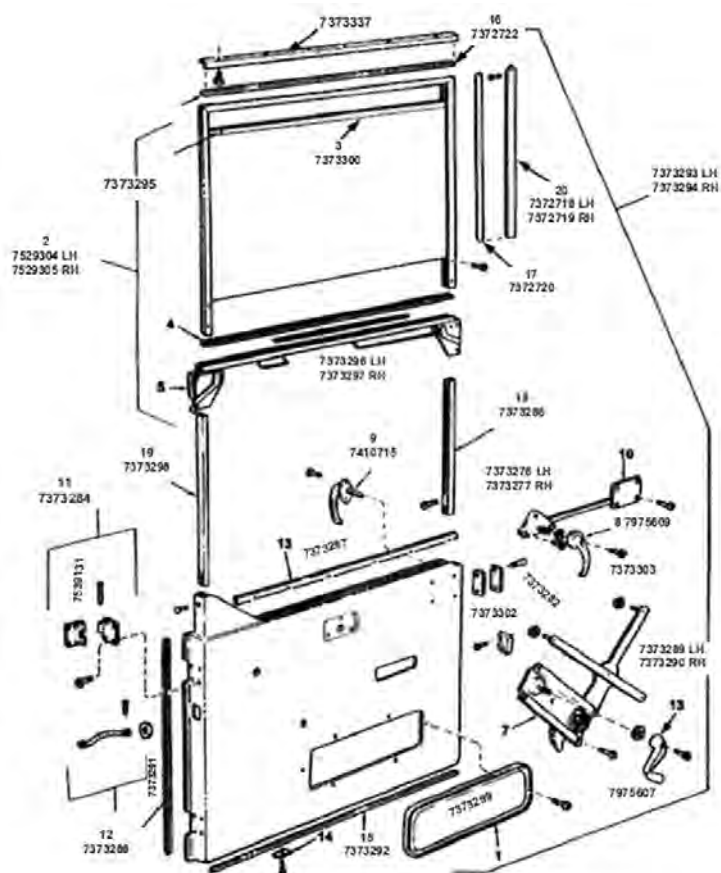
7071099 CLAMP
F250-AA
2.5 TON TRUCK, OUTER



DON'T MESS AROUND, Get the parts you need now. Why wait, we are one of the largest dealers of Military Spare Parts in the world.

CALL, WE CAN HANDLE IT ALL.

Door Components



7372718	20	Retainer, Cab Top: Left Door Pillar Post Weather-strip
7372719	20	Retainer, Cap Top: Door Pillar Post Weather-strip
7372721	17	Seal, Rubber, Special: Cab Top Lock Post Right
7372722	16	Weather-strip: Cab Top Door Head
7373276	10	Lock, Cab Door: Left
7373277	10	Lock, Cab Door: Remote Control Right
7373283	14	Clip: Weather seal
7373284	11	Hinge, Butt: Cab Door, Left with Pin
7373286	18	Channel, Lift, Vehicle Window Glass: Cab Door, Rear
7373287	13	Weather-strip: Door Glass
7373289	7	Regulator, Glass L/H
7373290	7	Regulator, Glass R/H
7373291	12	Rubber, Special Shaped Section: Door
7373292	15	Weather seal: Door Bottom
7373296	5	Channel: Cab Door Glass Regulator, Left
7373297	5	Channel: Cab Door Glass Regulator, Right
7373298	19	Channel: Glass Run, Front
7373299	1	Cover, Plate, Access
7373300	3	Rubber Channel: Cab Door Glass Frame Runner
7373301	4	Rubber Channel: Glass Regulator Runner
7410715	9	Handle, Door Outside
7529304	2	Frame, Door: Left
7529305	2	Frame, Door: Right
7975607	6	Handle, Window Regulator
7975609	8	Handle Assembly, Door

Lights / Lenses

- 8378786 TAIL LIGHT LEFT SIDE,
M38, M38A1, M37 DODGE
- 11614157 REAR STOP, TURN, BLACKOUT
MS52125 MARKER LAMP
RED REAR, M151
MILITARY HUMVEE
- 11614156 FRONT / TURN MARKER
MS52126 AMBER LENS FRONT M151,
MILITARY HUMVEE
- 8741491 HEADLAMP SEALED BEAM 24V.
UNIVERSAL APPLICATION
MOST M-SERIES VEHICLES
- 1683 MINIATURE BULB TAIL LIGHT
- 1251 BULB, TAIL LIGHT
- 1829 BULB, DASH
- 1873 BULB, DASH
- 1864 BULB, DASH
- 623 BULB, LIGHT, COMPOSITE



Gauges

- 7728855 TEMPERATURE GAUGE
MS24543-2
- 7354232 BATTERY GAUGE
MS24532-2
- 7728853 OIL PRESSURE GAUGE
MS24541-2
- MS24540-2 OIL PRESSURE GAUGE 0-120
- 7728852 FUEL GAUGE
MS24544-2



Check out our web site www.boyceequipment.com for pricing

MS39021-2 SPEEDOMETER
SPEEDOMETER 0-60 MILES,
MB, M38, M38A1 JEEPS, M35
AND MOST M SERIES



MS35916-2 TACHOMETER
M35 AND MOST M SERIES



Switches

11614131 MILITARY HUMVEE IGNITION SWITCH



8380699 IGNITION SWITCH
MS39060-2 4 CONNECTOR TYPE
M38, M38A1, M151, M35
2.5 TON TRUCK



MS51113-1 3 LEVER LIGHT SWITCH
MOST M-SERIES VEHICLES



11613632-1 TURN SIGNAL CONTROL SWITCH
MOST M-SERIES VEHICLES



8396186 DIMMER SWITCH
MOST M-SERIES VEHICLES



11640178 STARTER SWITCH M35 TRUCKS

5972752 BRAKE SWITCH
7064588 2.5 TON, 5 TON TRUCK



6200102 NEW STARTER SWITCH
AUTO LITE NO. : SW-4012



Starters

10935376 STARTER
M35 TRUCK



7762617 STARTER
M37 DODGE TRUCK



804376 STARTER
M38A1



943607 STARTER
M715 JEEP TRUCK



7017647 STARTER
M151



Misc Electrical Parts

- A0013002AC 60 AMP ALTERNATOR
- 11613631 CONTROL SIGNAL FLASHER
MOST M-SERIES VEHICLES



Ignition Parts

- 118712 24V. IGNITION COIL
MOST M-SERIES VEHICLES
- 118717 DISTRIBUTOR CAP 4-CYL. ENGINE
- 7374880 DISTRIBUTOR CAP 6-CYL. ENGINE
M37, M715
- 7539586 DISTRIBUTOR CAP G-742



Ignition / Tune Up Kits

- 7348578 DISTRIBUTOR ROTOR
4, 6 CYLINDER M-SERIES
- 923146 POINT SET 4, 6 CYLINDER M-SERIES
- 917128 CONDENSER 4, 6 CYLINDER M-SERIES



Spark Plugs

- 2245 SPARK PLUG
ALL 4 CYL., 6 CYL. M-SERIES VEHICLES



Horns

- | | |
|-----------|--|
| 7728341 | 24 VOLT HORN
MOST M SERIES |
| MS51301-1 | AIR HORN W/ SOLENOID
5 TON MILITARY TRUCK |



Fuel Tank Senders

- | | |
|-------------|------------------------------------|
| MS500040-6 | FUEL TANK SENDER
2.5 TON TRUCKS |
| MS5400040-5 | FUEL TANK SENDER
5 TON TRUCKS |



Wiper Motor & Wipers

- | | |
|-------------|------------------------------------|
| 7539696 | WIPER MOTOR 2.5 TON TRUCKS |
| 8713382 | WIPER ARM
2.5 TON TRUCK |
| 7001462 | WIPER BLADE, 10"
2.5 TON TRUCK |
| MS534048-12 | WIPER BLADE
5 TON TRUCK |
| 500810 | WIPER ARM
MB, M38, M38A1, DODGE |
| 500811 | WIPER BLADE 10"
M37 DODGE |
| 500813 | WIPER BLADE 8"
MB, M38, M38A1 |



Brake Shoes

7521767 BRAKE SHOE
B250-K 2.5 TON TRUCK



11665741 BRAKE SHOE
B500-L 5 TON TRUCK



Brake Hoses

800953 FRT BRAKE HOSE
MB, M38, M38A1



7373250 FRT BRAKE HOSE G-742

800896 FRT CENTER BRAKE HOSE
MB, M38, M38A1



7373247 FRT CENTER BRAKE HOSE
G-742

800952 REAR BRAKE HOSE
MB, M38, M38A1



7373248 REAR BRAKE HOSE
G-742

7409331 REAR BRAKE HOSE
5 TON MILITARY TRUCK



7409330 FRT BRAKE HOSE
5 TON MILITARY TRUCK

7351302 BRAKE HOSE, SHORT
M37 DODGE, POWER WAGON



7351304 BRAKE HOSE, LONG
M37 DODGE, POWER WAGON



7059147 FRT BRAKE HOSE
M151

8359976 REAR BRAKE HOSE
M151



Brake Parts

F9375 WHEEL CYLINDER
M37, 924643 LEFT



F9376 WHEEL CYLINDER
M37, 924642 RIGHT



943652 WHEEL CYLINDER
11640755-1 M715 LEFT

944578 WHEEL CYLINDER
11640755-2 M715 RIGHT

8333648 WHEEL CYLINDER, REAR 2"
5 TON TRUCK



7348976 WHEEL CYLINDER
2.5 TON TRUCK



8758255 WHEEL CYLINDER, FRONT 1 3/4"
5 TON TRUCK



1269447 MASTER CYLINDER
DODGE M37



7410830 MASTER CYLINDER
G-749



7539267 MASTER CYLINDER
2.5 TON TRUCK



7411070 MASTER CYLINDER
5 TON TRUCK



Brake Cable

7409365 BRAKE CABLE
5 TON TRUCK



12255644-1 BRAKE CABLE
M900 5 TON TRUCK

11609834 BRAKE CABLE
M35, 2.5 TON TRUCK



Air Pak Assemblies

7376689 AIR PAK ASSY.
5 TON TRUCK



8333870 AIR PAK REPAIR KIT
5 TON TRUCK

8345003 AIR PAK ASSY.
2.5 TON TRUCK



8345007 AIR PAK REPAIR KIT
2.5 TON TRUCK

Dust Boots / Knuckle Boots

7346994 DUST BOOT
F500-EE 5 TON TRUCK



7410883 DUST BOOT
F250-Y 2.5 TON TRUCK



8376530 DUST BOOT W/O ZIPPER
2.5 TON TRUCK

Clutch Assemblies / Bearing Assy

11621375 CLUTCH COVER
M35, 2.5 TON TRUCK



8735507 CLUTCH COVER
5 TON TRUCK



11668332 CLUTCH DISC
M35, 2.5 TON TRUCK



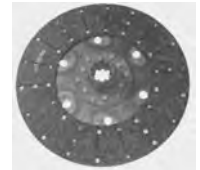
7349076 CLUTCH COVER
M37 DODGE TRUCK



7376460 CLUTCH COVER
M37 DODGE TRUCK



8735503 CLUTCH DISC
5 TON TRUCK



802410 CLUTCH DISC MB, M38



7376156 CLUTCH BEARING ASSY.
5 TON TRUCK



945255 CLUTCH BEARING ASSY.
ALL 4 CYLINDER



7529018 CLUTCH BEARING
2.5 TON TRUCK



2759 CLUTCH BEARING
5 TON TRUCK

581499 CLUTCH BEARING
M37 DODGE





ORDERING, SHIPPING AND RETURN INSTRUCTIONS

1. TELEPHONE ORDERS

- a. You can place an order for immediate shipment by calling 1-800-748-4269 Collect. Phone Orders must be paid by MasterCard, Visa, Discover or American Express. C.O.D. orders will be accepted for amounts totaling less than \$300 and that can be shipped U.P.S. NO truck line shipments are sent C.O.D.
- b. If you wish to wire your funds, please note information:

For Further Credit To: First National Bank of Layton
12 South Main
Layton, Utah 84041
(801) 544-4241

International Wire
ZFNBUS55
Zions First National Bank

ABA #124300754
On Line with Fed Wire
Send Wire Type 10

Final Credit To: Boyce Equipment & Parts Co. Inc.
Acct. #01205020 01

2. MAIL ORDERS

- a. If available, please use Boyce order form, carefully filling in all requested information. If you do not have an order form, clearly print your name, address, a phone number at which you can be reached during business hours (8:00 a.m. – 5:00 p.m. Mountain Time), and your home phone number. (Please use physical address; U.P.S. will not deliver to a P.O. Box).
- b. Show make, model and year of vehicle.
- c. Show part number and description of part(s) you're ordering.
- d. When necessary, make sure to include color desired.
- e. There is no sales tax on orders being shipped outside Utah. Residents of Utah must include sales tax.
- f. If you pay for your order via bank check, money order or credit card, it will be shipped within 2–4 weeks (unless item is out of stock.) Orders paid by personal check are held for two (2) weeks to let check clear your bank.
- g. If you have questions that require written answers, please include a stamped, self addressed envelope.

3. SHIPPING

- a. To keep prices low, and in fairness to everyone, shipping charges are not included in the price of an item. You must pay shipping on U.P.S., truck, air freight and parcel post shipments. U.P.S. charges are automatically added to credit card sales slips on charge orders. Charges will be included in C.O.D. shipments. Orders received by mail, paid by check or money order, in which shipping charges have not been included, will be sent shipping charges collect. All truck shipments are sent freight collect with payment going to the trucking company.
- b. Unless notified otherwise, all shipments are F.O.B. Ogden Utah.
- c. Trucking lines are chosen from experience, with consideration given to transit time and price. You may request a particular freight company. We will do our best to ship accordingly.
- d. **IMPORTANT!!!** All shipments should be carefully inspected at time of delivery, because all freight damage claims must be filed by you to the delivering carrier immediately. (Note: It is much easier to resolve a damage claim if you have the driver's signature on the freight bill noting damages.) Do not refuse freight if damaged- this only wastes time and money. The merchandise leaves our warehouse in excellent condition; therefore, Boyce accepts NO responsibility on damaged freight.
- e. To keep your costs down, we ship our parts under special classifications that provide low rates.
- f. APO/FPO address, complete payment is mandatory. On items that cannot be sent parcel post, an actual physical address is necessary. Credit card orders cannot be sent to APO/FPO addresses.
- g. Over 90% of our merchandise is in stock at all times. However, if an item is back-ordered, you will be notified at once with the approximate shipping date.

4. RETURNS

- a. Authorization must be obtained prior to returning any merchandise. A Return Goods Invoice (RGI) number will be given to you upon approval. This number must appear clearly on the outside of the package you are returning.
- b. Merchandise being returned must come back freight prepaid, in original package, and with a copy of the original invoice.

PLEASE NOTE:

If this procedure is not followed, **NO** credit, **NO** refund, **NO** exchange will be allowed.
All returns must be made within 30 days of purchase date.

Not responsible for typographical errors.
All prices subject to change without notice.



NOTES

This image shows a single page from a notebook or ledger. It features approximately 20 evenly spaced, thin grey horizontal lines running across its width. The lines are uniform in thickness and color, providing a guide for writing. There are no vertical margin lines, headers, footers, or other markings present on the page.